

# REGIONAL PROFILE

---

<b>OVERVIEW.....</b>	<b>1</b>
<b>POPULATION AND DEMOGRAPHICS.....</b>	<b>4</b>
2010 POPULATION.....	19
POPULATION GROWTH .....	21
AGE.....	21
ETHNICITY .....	23
EDUCATION.....	24
HOUSEHOLD INCOME.....	25
<b>ASSET INVENTORY .....</b>	<b>27</b>
<b>FUTURE DEVELOPMENT .....</b>	<b>28</b>
ECONOMIC IMPACTS.....	31

## Overview

The CVCOG extends over a thirteen-county statutory district, which is bordered by the Colorado River along the north and east and Devils and Llano Rivers along the south and includes the following counties for an aggregate population of 154,192, according to the 2010 U.S. Census Bureau: Coke, Concho, Crockett, Irion, Kimble, McCulloch, Mason, Menard, Reagan, Schleicher, Sterling, Sutton, and Tom Green. The CVCOG Region covers 16,398 square miles and is home to the Brady, Colorado, Concho, Devils, Llano, and San Saba Rivers. All but its extreme northeast portion is underlain by the Edwards-Trinity (Plateau) Aquifer, which flows through sandstone and limestone formations to numerous pleasant springs. Cypress can be found along rivers and creeks, with live oak, shinnery oak, juniper, and mesquite elsewhere. Also located in the CVCOG

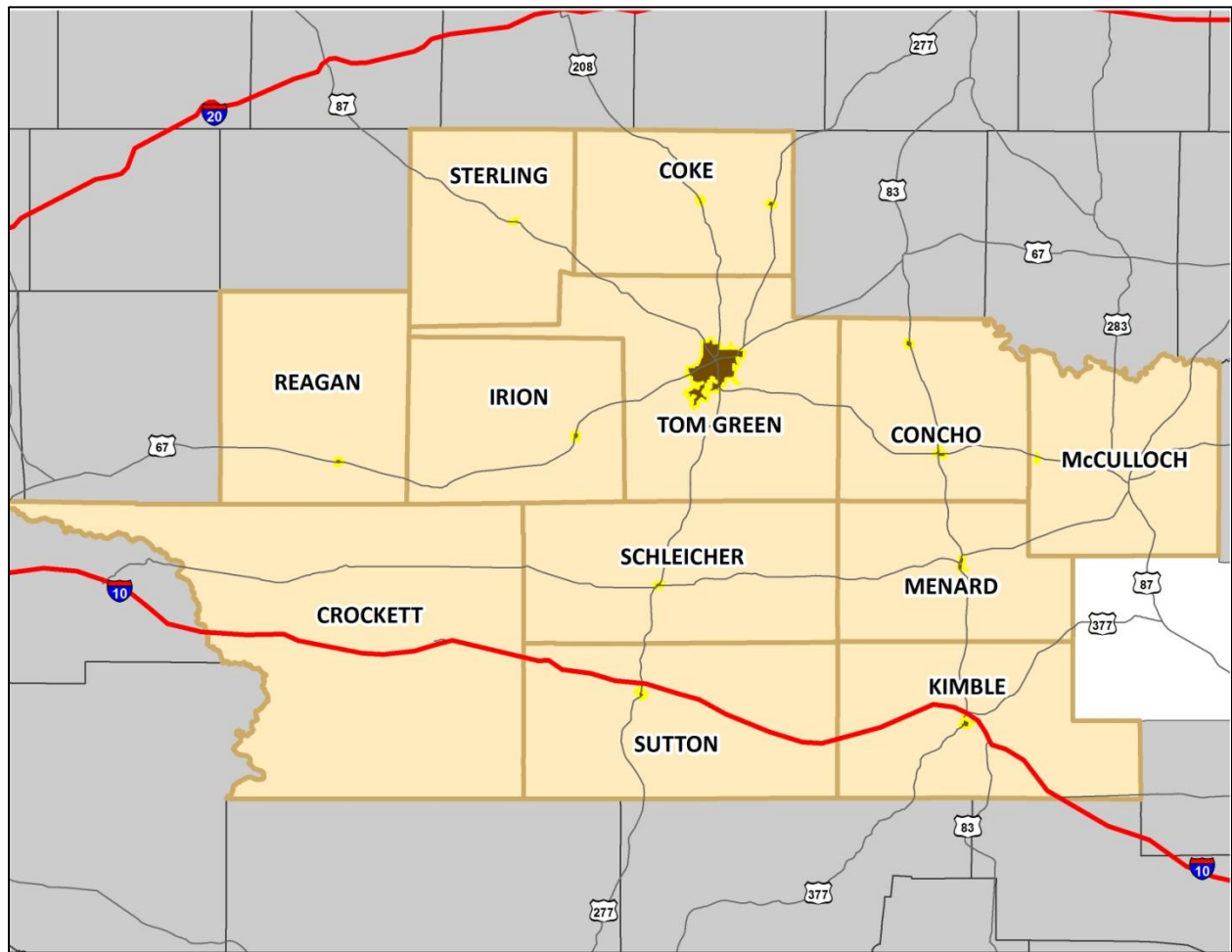


## Regional Profile

---

Region is the Spraberry Trend, a large oil field that covers the majority of Reagan County and portions of Irion and Crockett counties.

**Figure 3-1. Map of Concho Valley Council of Governments Study Area**



The map above, Figure 3-1, illustrates the extent of the study area, including the twelve participating counties that form the Concho Valley Council of Governments. Provided in Table 3-1 below is a listing of the jurisdictions in the CVCOG and status of participation in the Hazard Mitigation Plan Update. It is important to note that Mason County, and one incorporated municipality, City of Brady in McCulloch County, are not participating in this study. Both Mason County and the City of Brady were recently part of a risk assessment for the Texas Colorado River Floodplain Coalition (TCRFC).

**Table 3-1. Participating and Non-Participating Jurisdictions in the Study Area**

PARTICIPATING JURISDICTIONS	NON-PARTICIPATING JURISDICTIONS
<b>Coke County</b>	
Town of Bronte	
City of Robert Lee	
<b>Concho County</b>	
City of Eden	
Town of Paint Rock	
<b>Crockett County</b>	
(No Incorporated Cities)	
<b>Irion County</b>	
City of Mertzon	
<b>Kimble County</b>	
City of Junction	
<b>McCulloch County</b>	
Town of Melvin	City of Brady
<b>Menard County</b>	
City of Menard	
<b>Reagan County</b>	
City of Big Lake	
<b>Schleicher County</b>	
City of Eldorado	
<b>Sterling County</b>	
City of Sterling City	
<b>Sutton County</b>	
City of Sonora	
<b>Tom Green County</b>	
City of San Angelo	
	<b>Mason County</b>

To give a more comprehensive overview of the CVCOG Region in its entirety, some background information is included on Mason County and the City of Brady in McCulloch County, even though they are not participating in the Plan Update.

## Population and Demographics

The population distribution for the CVCOG is depicted in Figures 3-2 through 3-14, which is based on data from the 2000 U.S. Census Bureau. The maps display the twelve counties including unincorporated areas, as well as the participating jurisdictions. 2000 Census data at the census block level was used to determine population distribution. Table 3-2 provides a numeric breakdown of population by jurisdiction.

**Table 3-2. Population Distribution by Jurisdiction**

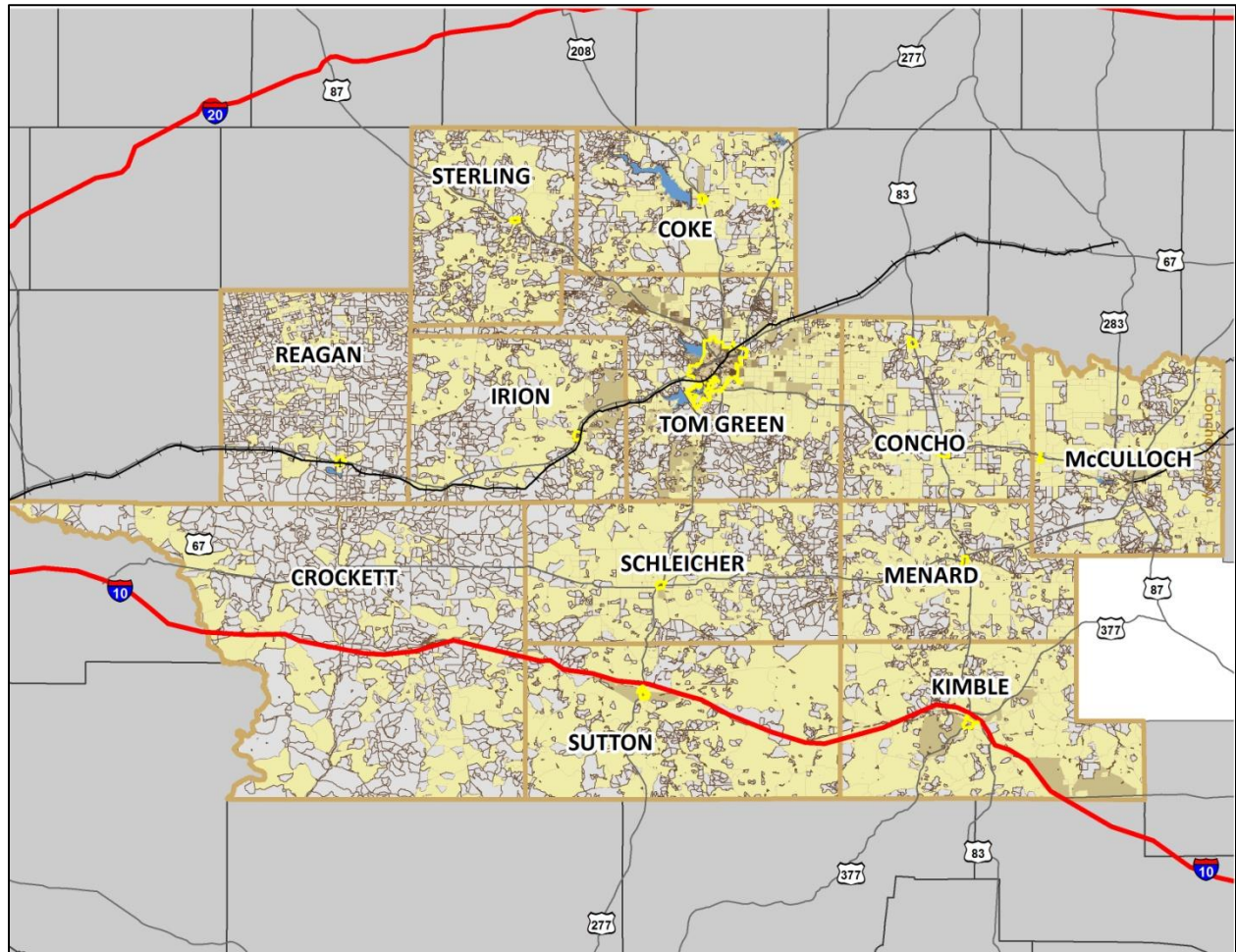
JURISDICTION	TOTAL 2000 POPULATION	ESTIMATED SPECIAL NEEDS POPULATIONS	
		Elderly (Over 65)	Low Income (<= \$20,000)
<b>Coke County</b>	<b>3,864</b>	<b>931</b>	<b>465</b>
Bronte	1,076	264	161
Robert Lee	1,171	335	163
Uninc. Coke County	1,617	332	141
<b>Concho County</b>	<b>3,966</b>	<b>547</b>	<b>310</b>
Eden	2,561	282	186
Paint Rock	320	43	53
Uninc. Concho County	1,085	222	71
<b>Crockett County</b>	<b>4,099</b>	<b>528</b>	<b>783</b>
(No Incorporated Cities)			
<b>Irion County</b>	<b>1,771</b>	<b>276</b>	<b>148</b>
Mertzon	839	127	80
Uninc. Irion County	932	149	68
<b>Kimble County</b>	<b>4,468</b>	<b>932</b>	<b>828</b>
Junction	2,618	474	567
Uninc. Kimble County	1,850	458	261
<b>McCulloch County</b>	<b>8,205</b>	<b>1,602</b>	<b>1,798</b>
Melvin	155	35	80
Uninc. McCulloch County	8,050	1,567	1,718
<b>Mason County</b>	<b>3,738</b>	<b>879</b>	<b>488</b>
<b>Menard County</b>	<b>2,360</b>	<b>518</b>	<b>597</b>
Menard	1,653	340	535
Uninc. Menard County	707	178	62
<b>Reagan County</b>	<b>3,326</b>	<b>342</b>	<b>387</b>
Big Lake	2,885	293	318

## Regional Profile

---

JURISDICTION	TOTAL 2000 POPULATION	ESTIMATED SPECIAL NEEDS POPULATIONS	
		Elderly (Over 65)	Low Income (<= \$20,000)
Uninc. Reagan County	441	49	69
<b>Schleicher County</b>	<b>2,935</b>	<b>482</b>	<b>621</b>
Eldorado	1,951	312	504
Uninc. Schleicher County	984	170	117
<b>Sterling County</b>	<b>1,393</b>	<b>204</b>	<b>230</b>
Sterling City	1,081	170	186
Uninc. Sterling County	312	34	44
<b>Sutton County</b>	<b>4,077</b>	<b>508</b>	<b>726</b>
Sonora	2,924	312	492
Uninc. Sutton County	1,153	196	234
<b>Tom Green County</b>	<b>104,010</b>	<b>13,969</b>	<b>15,193</b>
San Angelo	88,439	12,211	13,275
Uninc. Tom Green County	15,571	1,758	1,918
<b>TOTALS FOR STUDY AREA</b>	<b>148,212</b>	<b>21,718</b>	<b>22,574</b>

Figure 3-2. Population Distribution for the CVCOG Study Area



LEGEND

- |                             |                            |                   |
|-----------------------------|----------------------------|-------------------|
| Population Per Census Block | CVCOG County               | Interstates       |
| 0                           | Participating Municipality | U.S. Highways     |
| 1 - 42                      | Non-Participating County   | Rail              |
| 43 - 97                     | Surrounding Counties       | Major Water Areas |
| 98 - 202                    |                            |                   |
| 203 - 400                   |                            |                   |
| 401 - 1303                  |                            |                   |

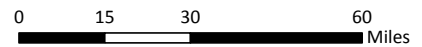
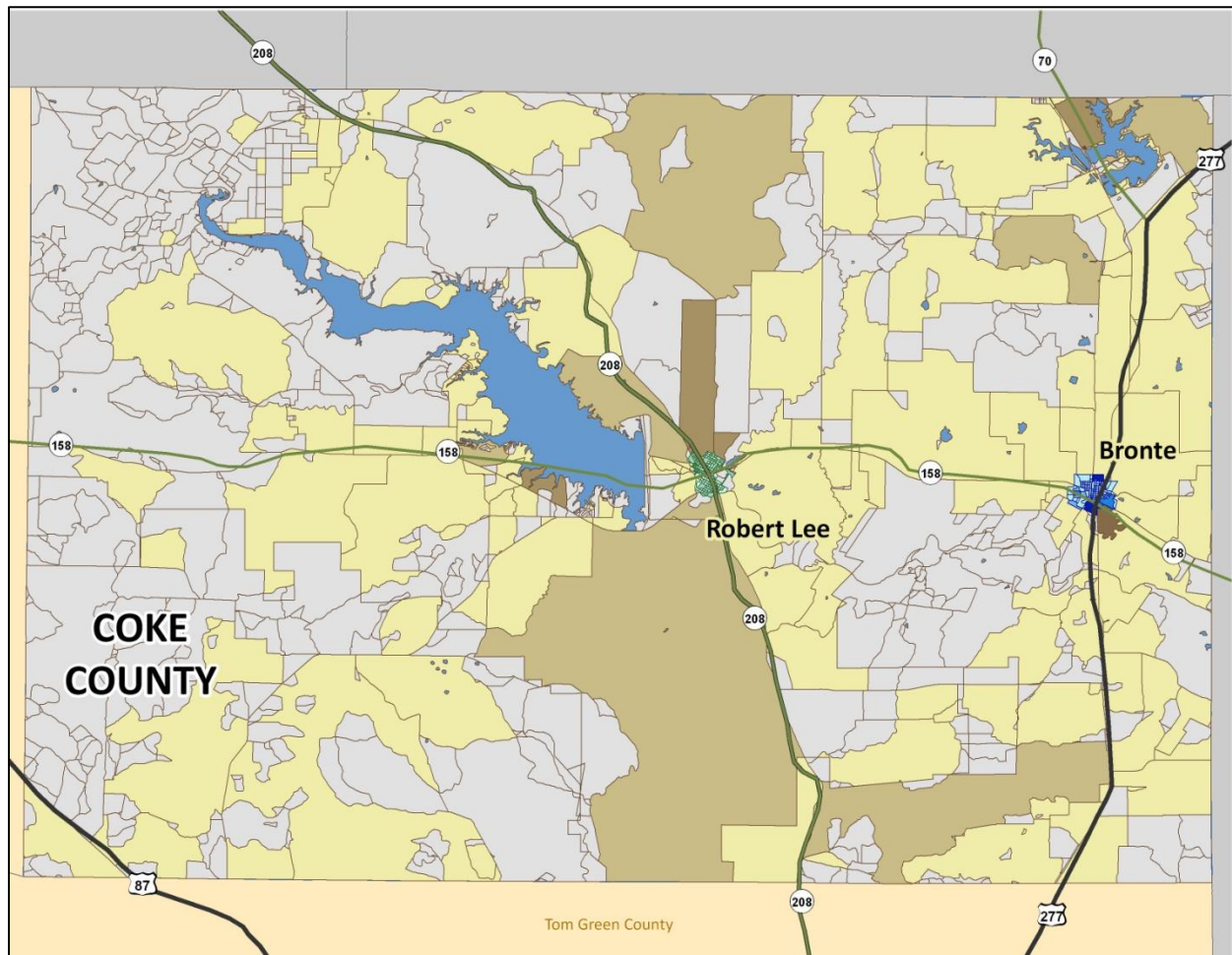


Figure 3-3. Population Distribution for Coke County



LEGEND

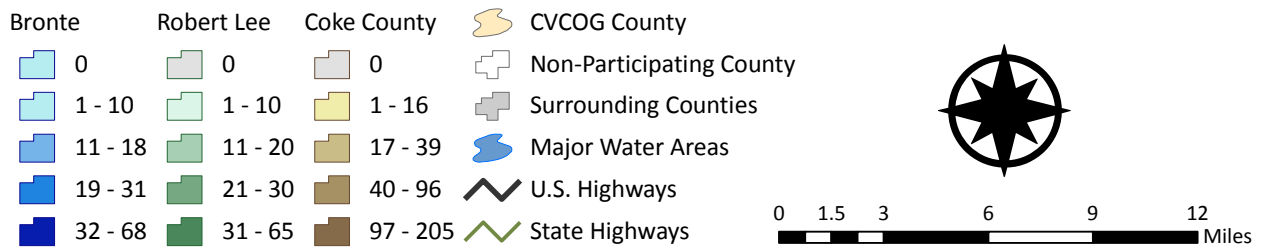
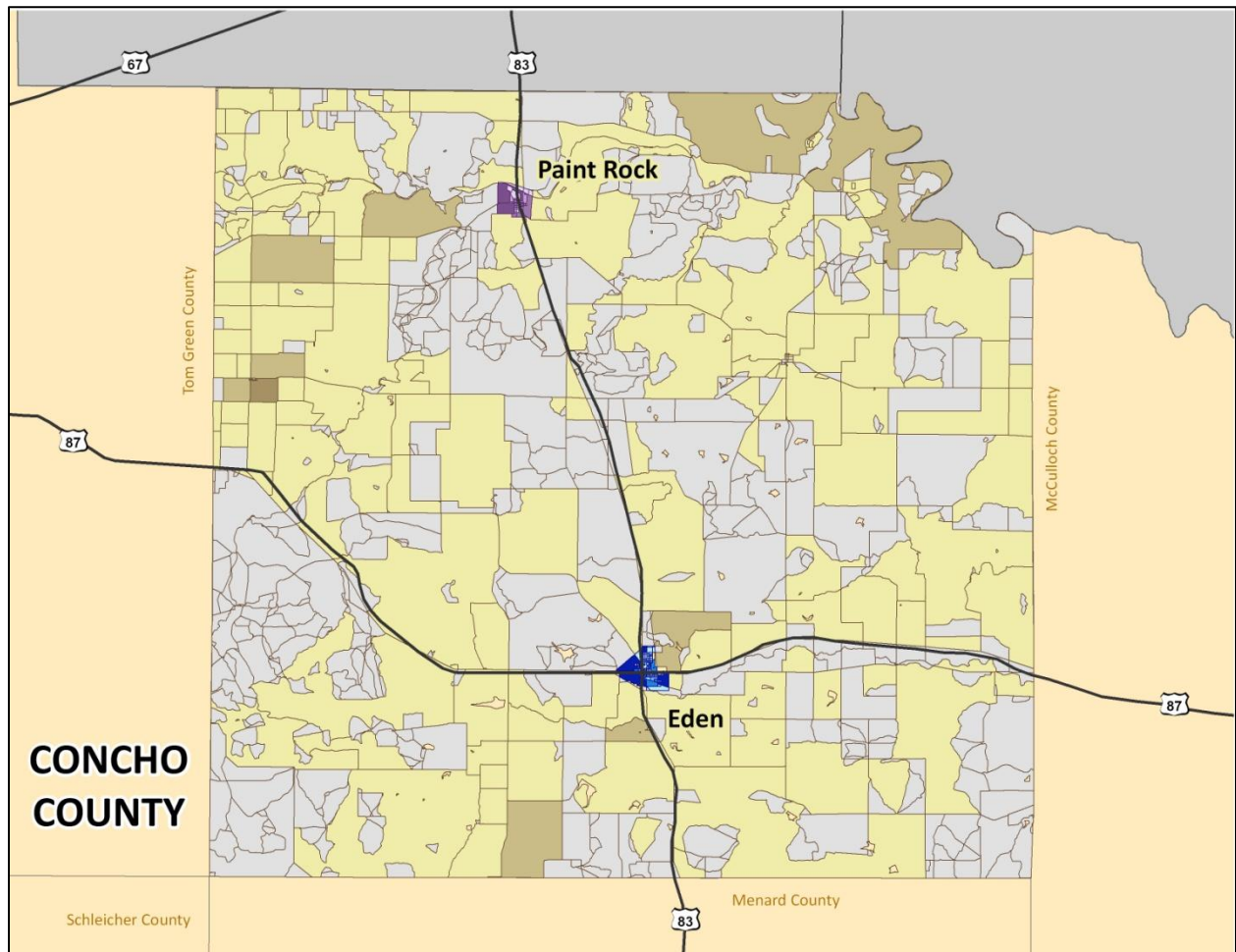


Figure 3-4. Population Distribution for Concho County



LEGEND

Eden	Paint Rock	Concho County	CVCOG County
0	0	0	Non-Participating County
1 - 10	1 - 6	1 - 16	Surrounding Counties
11 - 18	7 - 11	17 - 39	Major Water Areas
19 - 31	12 - 18	40 - 96	U.S. Highways
32 - 68	19 - 36	97 - 205	State Highways

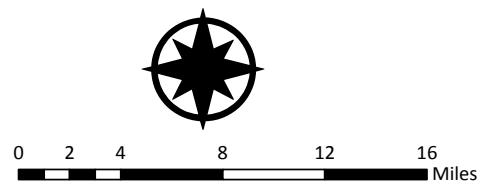
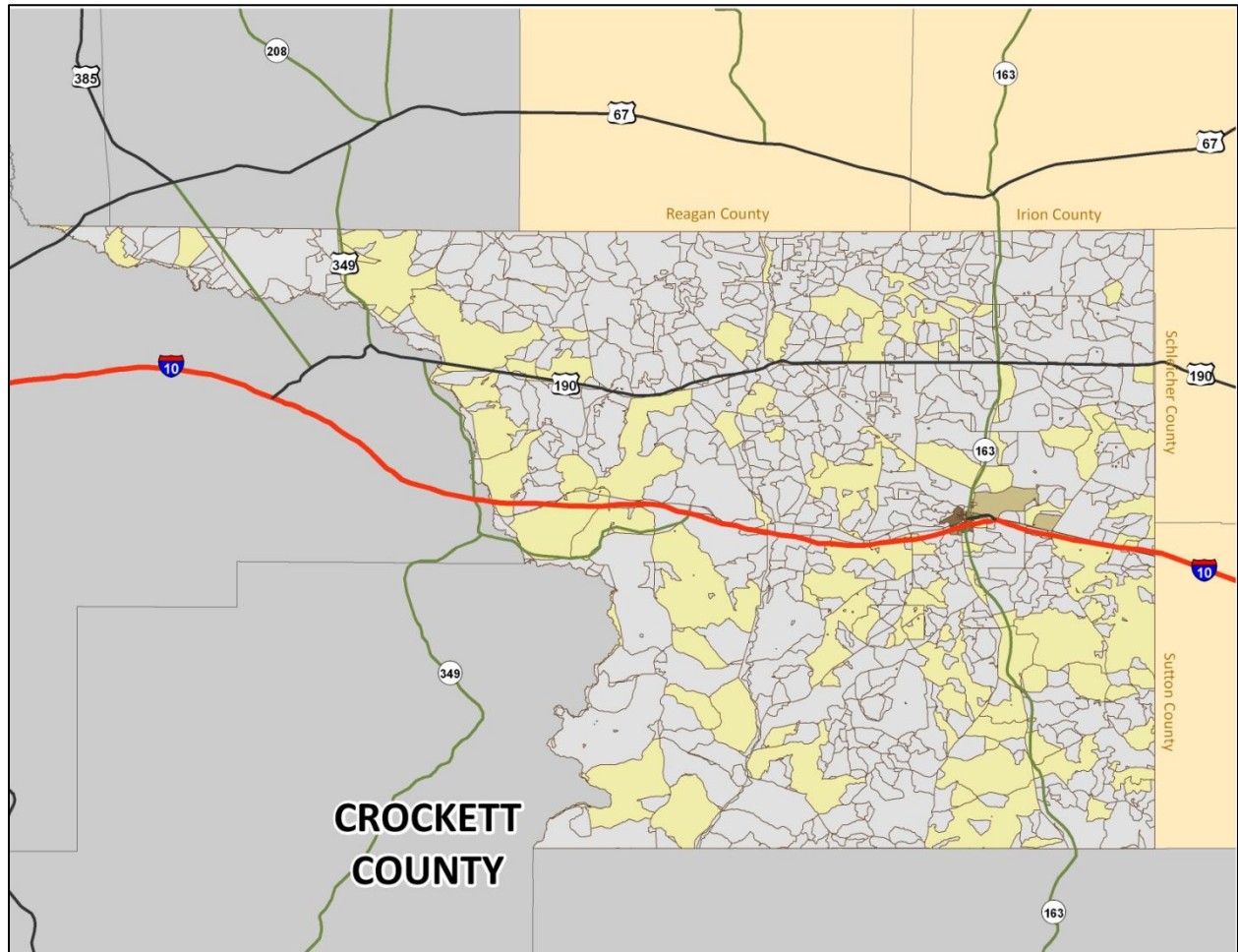




Figure 3-5. Population Distribution for Crockett County



LEGEND

- |                 |                          |                |
|-----------------|--------------------------|----------------|
| Crockett County | CVCOG County             | Interstates    |
| 0               | Non-Participating County | U.S. Highways  |
| 1 - 20          | Surrounding Counties     | State Highways |
| 21 - 48         | Major Water Areas        |                |
| 49 - 97         |                          |                |
| 98 - 251        |                          |                |

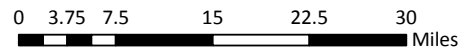
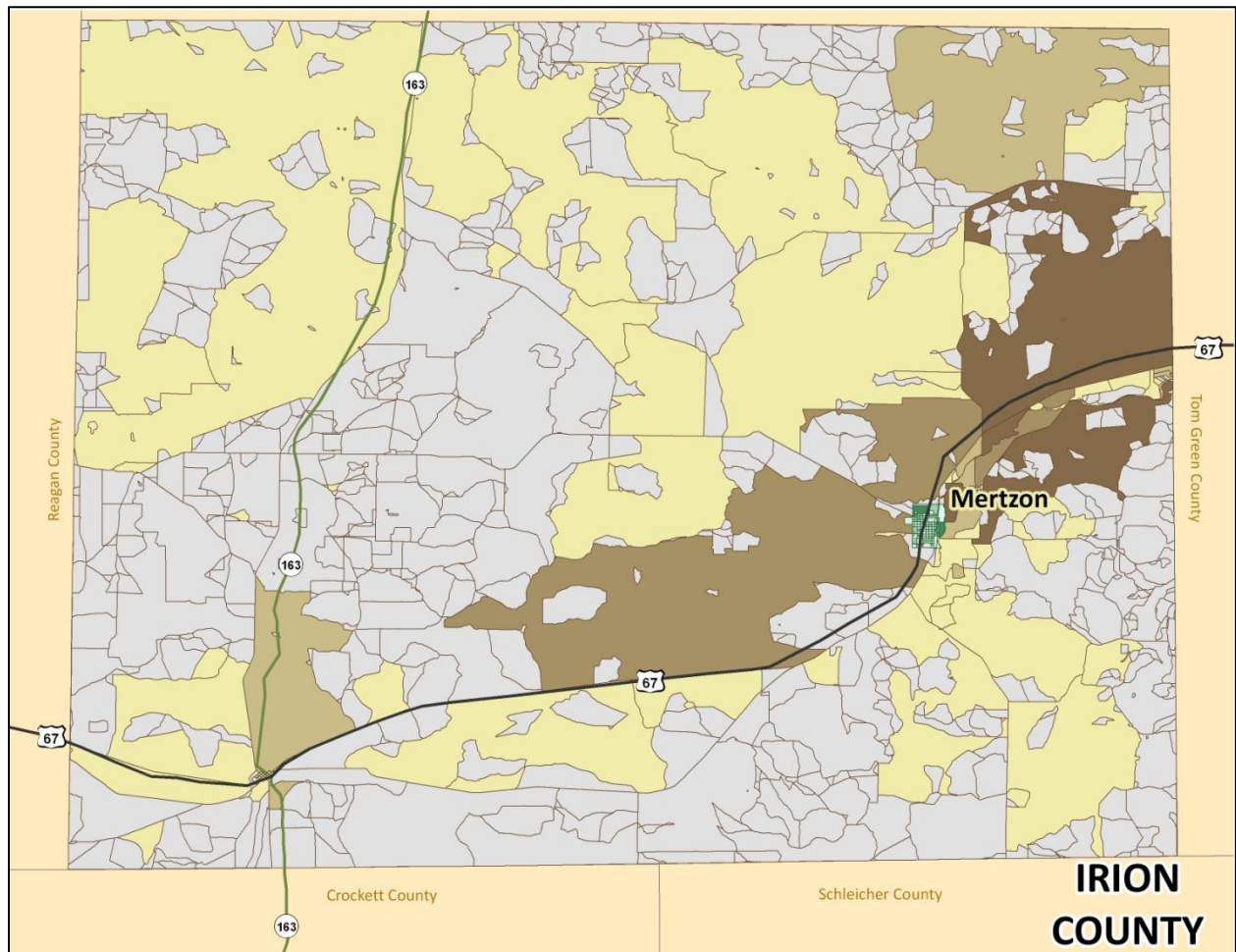


Figure 3-6. Population Distribution for Irion County



LEGEND

Mertzon	Irion County	CVCOG County	Interstates
0	0	Non-Participating County	U.S. Highways
1 - 10	1 - 12	Surrounding Counties	State Highways
11 - 20	13 - 25	Major Water Areas	
21 - 30	26 - 39		
31 - 65	40 - 62		

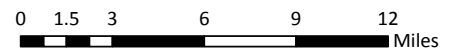
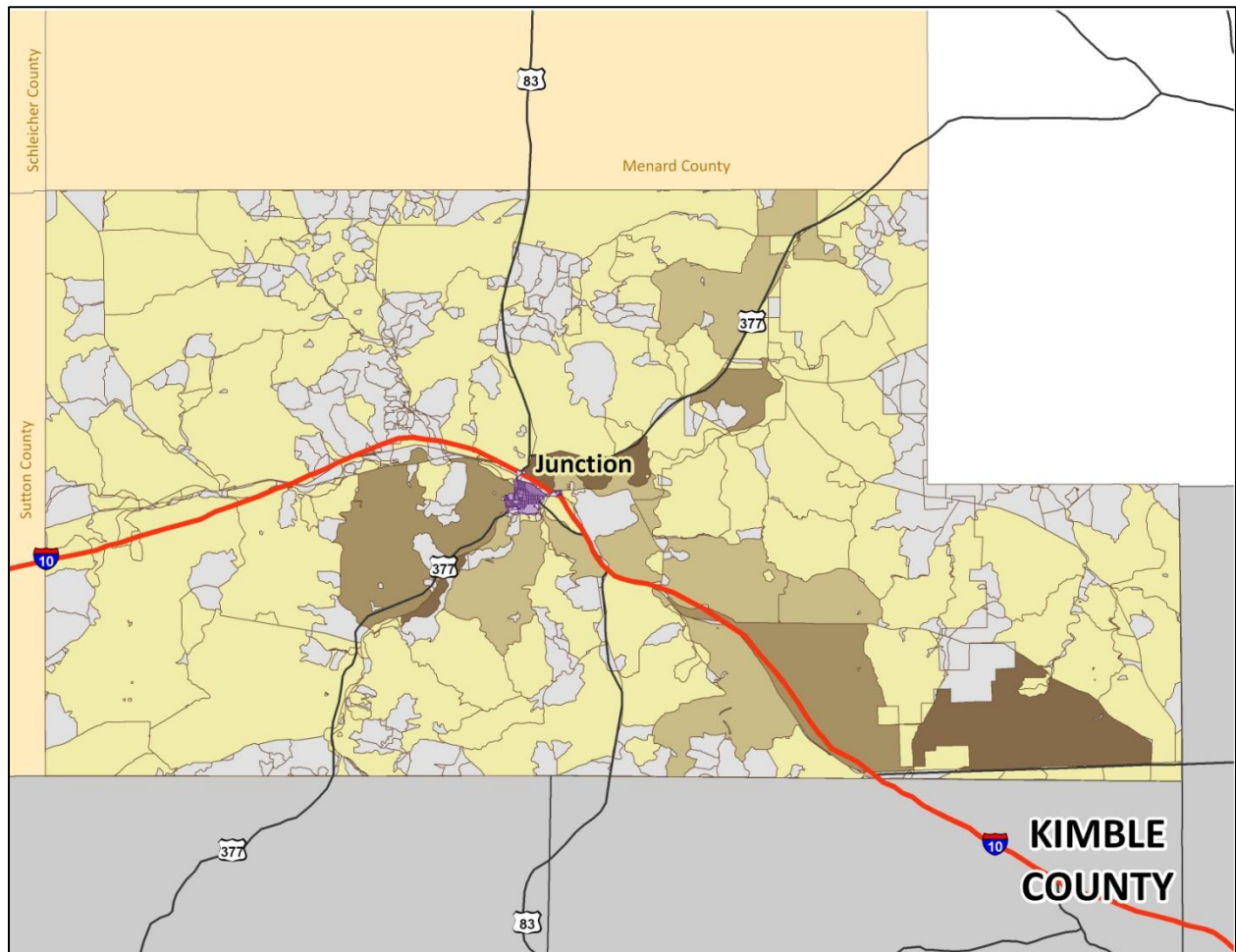


Figure 3-7. Population Distribution for Kimble County



LEGEND

Junction	Kimble County	CVCOG County	Interstates
0	0	Major Water Areas	State Highways
1 - 17	1 - 17	Non-Participating County	U.S. Highways
18 - 33	18 - 36	Surrounding Counties	
34 - 58	37 - 61		
59 - 125	62 - 125		

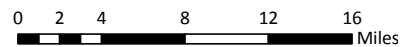
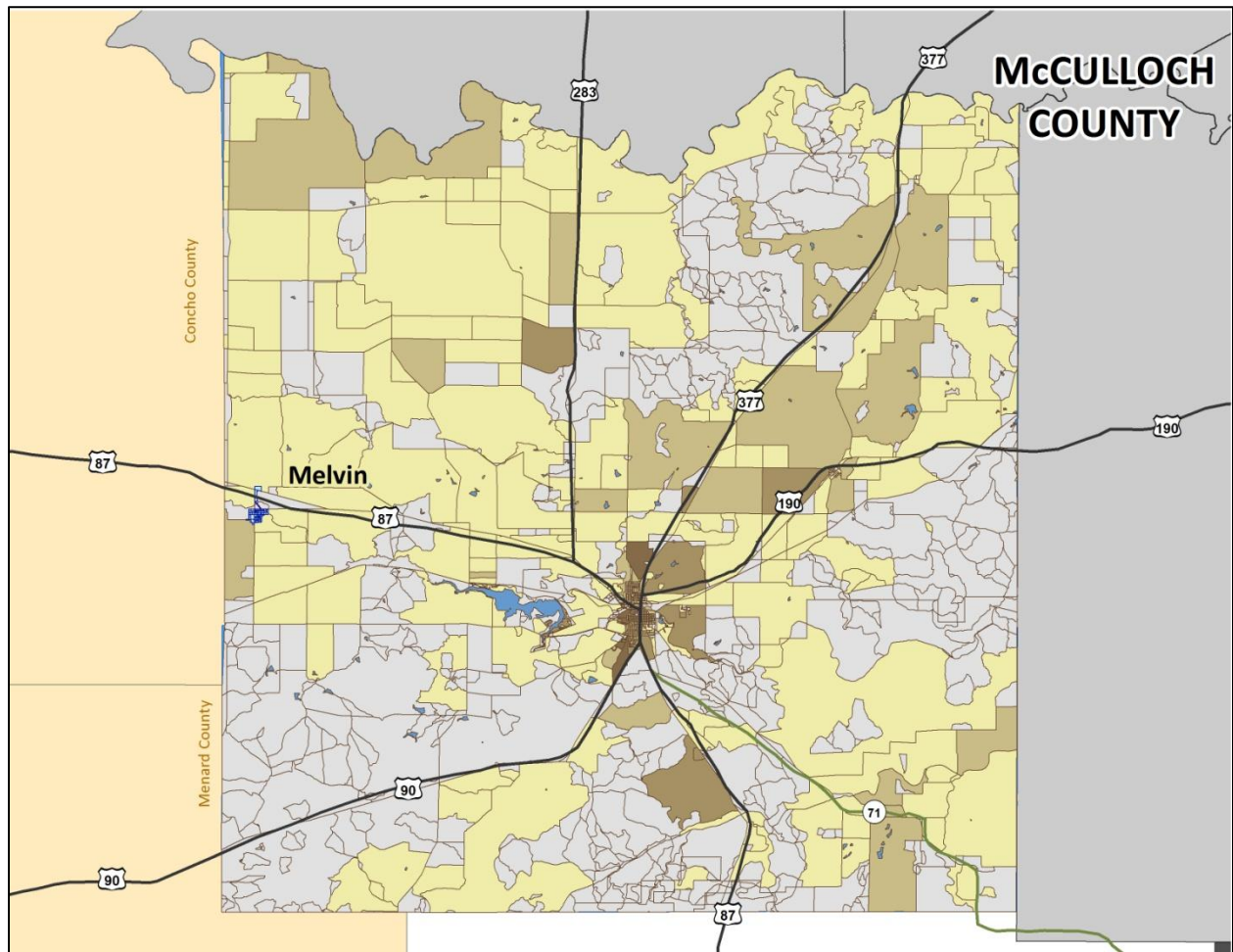


Figure 3-8. Population Distribution for McCulloch County



LEGEND

Melvin	McCulloch County	CVCOG County
0	0	Non-Participating County
1 - 3	1 - 16	Surrounding Counties
4 - 6	17 - 35	Major Water Areas
7 - 10	36 - 70	U.S. Highways
11 - 13	71 - 131	State Highways

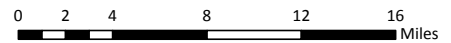
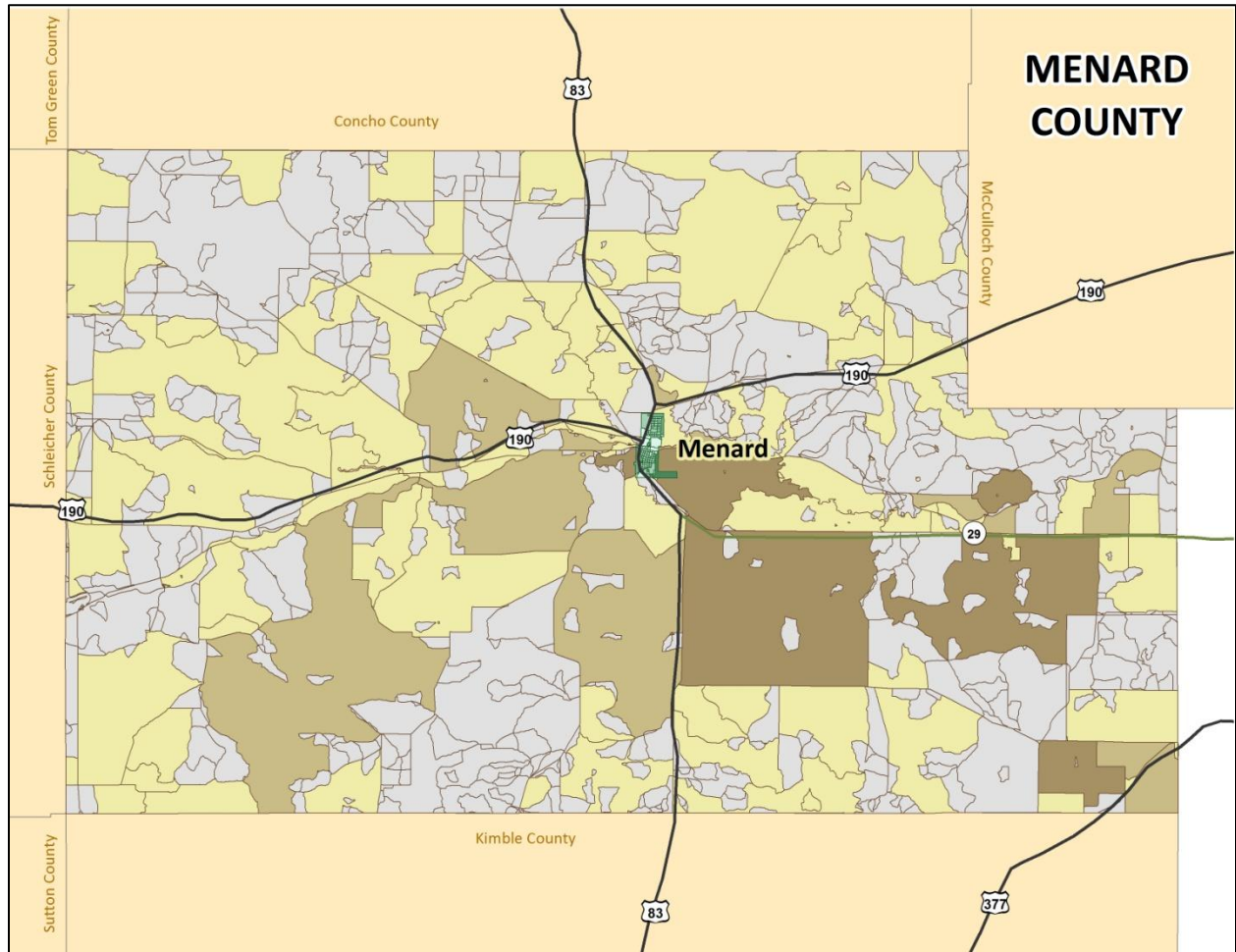


Figure 3-9. Population Distribution for Menard County



LEGEND

<b>Menard</b>	<b>Menard County</b>	CVCOG County	U.S. Highways
0	0	Non-Participating County	State Highways
1 - 17	1 - 9	Surrounding Counties	Rail
18 - 43	10 - 19	Major Water Areas	
44 - 91	20 - 66		
92 - 177	67 - 177		

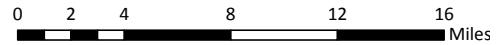
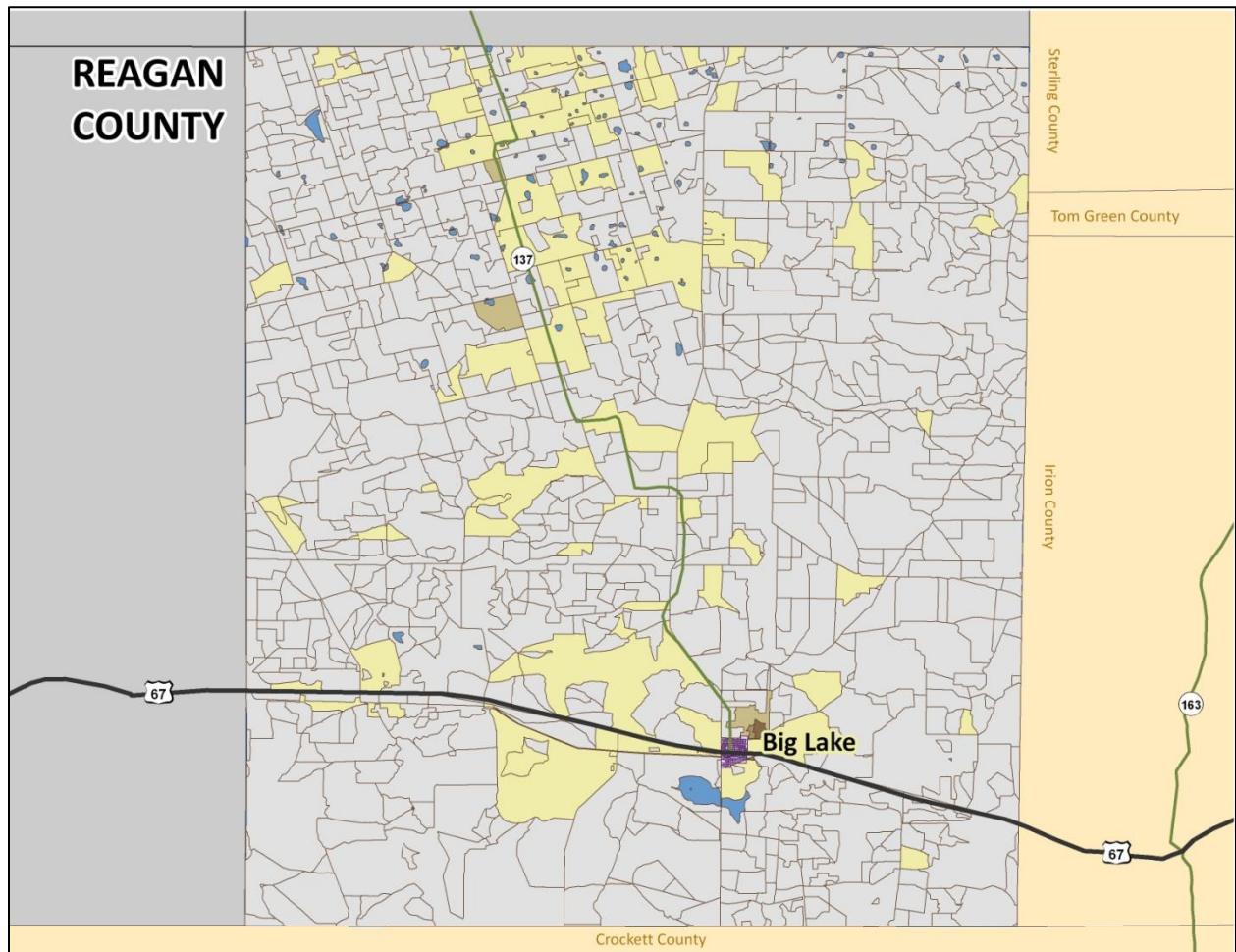


Figure 3-10. Population Distribution for Reagan County



LEGEND

- |          |               |                          |                |
|----------|---------------|--------------------------|----------------|
| Big Lake | Reagan County | CVCOG County             | Interstates    |
| 0        | 0             | Non-Participating County | State Highways |
| 1 - 15   | 1 - 15        | Surrounding Counties     | U.S. Highways  |
| 16 - 23  | 16 - 24       | Major Water Areas        |                |
| 24 - 38  | 25 - 38       |                          |                |
| 39 - 60  | 39 - 60       |                          |                |

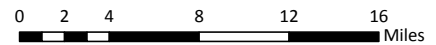
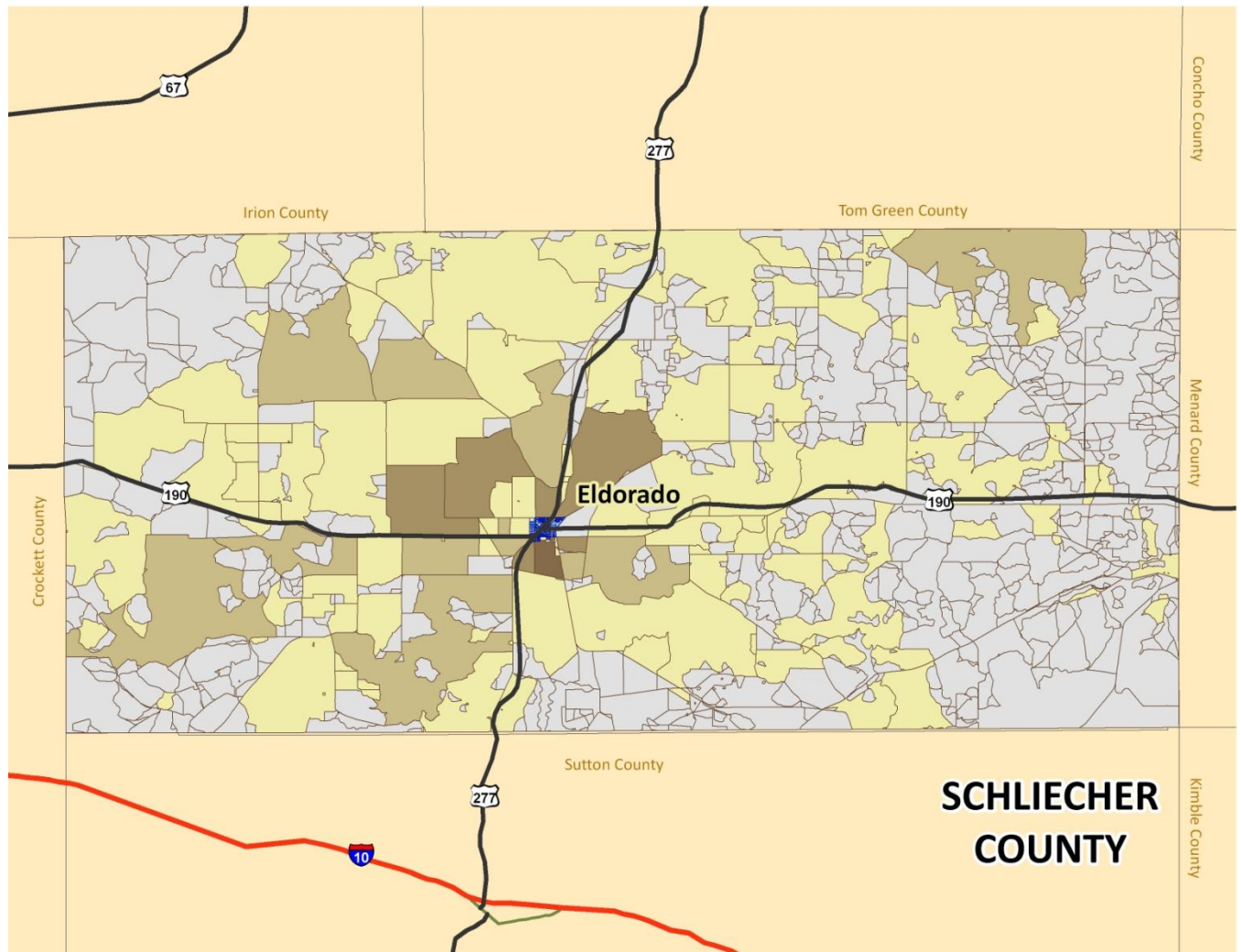


Figure 3-11. Population Distribution for Schleicher County



LEGEND

- |          |                   |                          |                |
|----------|-------------------|--------------------------|----------------|
| Eldorado | Schleicher County | CVCOG County             | Interstates    |
| 0        | 0                 | Non-Participating County | U.S. Highways  |
| 1 - 12   | 1 - 11            | Surrounding Counties     | State Highways |
| 13 - 23  | 12 - 23           | Major Water Areas        |                |
| 24 - 47  | 24 - 47           |                          |                |
| 48 - 73  | 48 - 82           |                          |                |

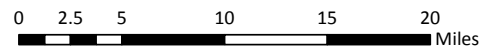
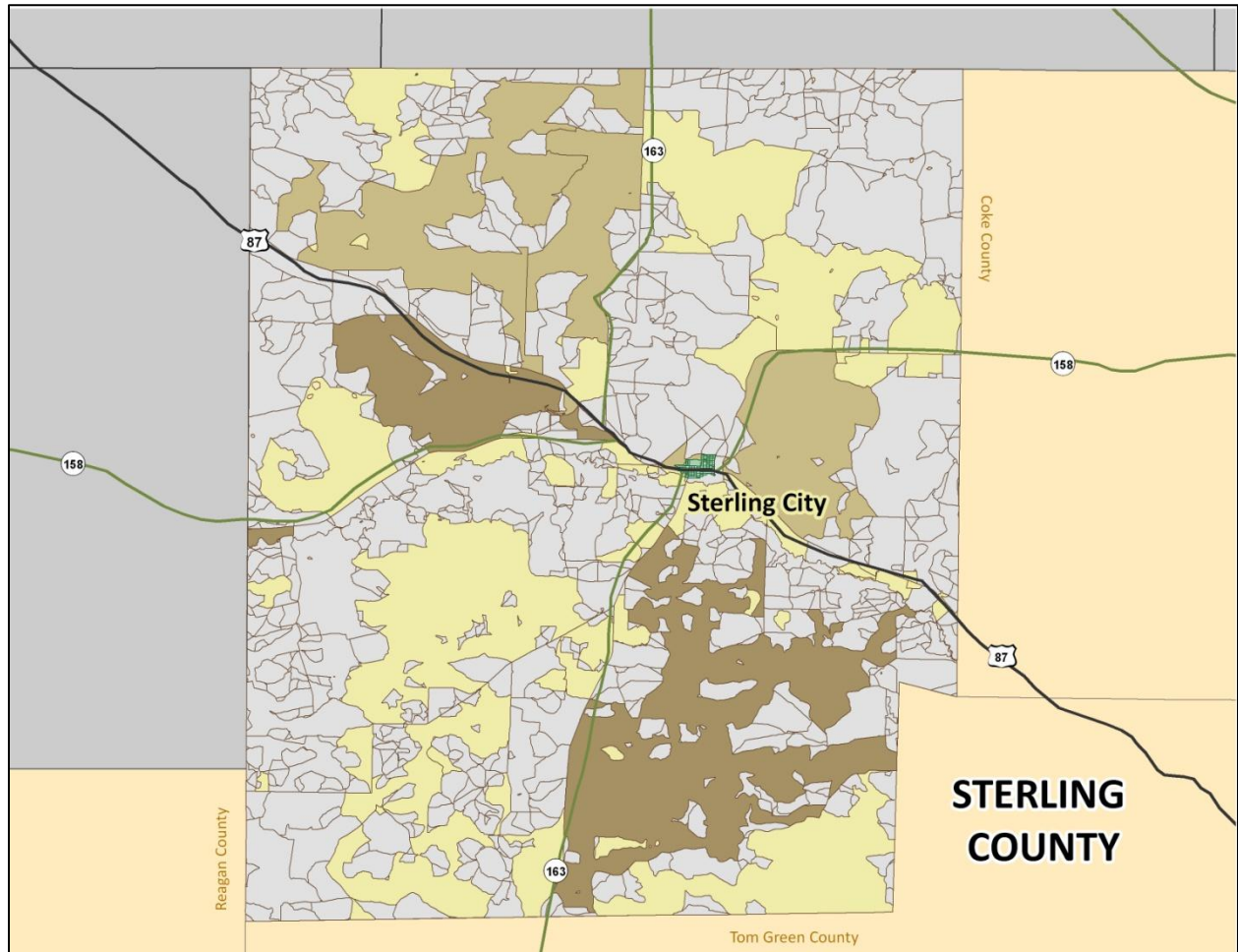


Figure 3-12. Population Distribution for Sterling County



LEGEND

0	0	CVMCOG County	Interstates
1 - 11	1 - 10	Non-Participating County	U.S. Highways
12 - 18	11 - 17	Surrounding Counties	State Highways
19 - 26	18 - 26		
27 - 45	27 - 45		

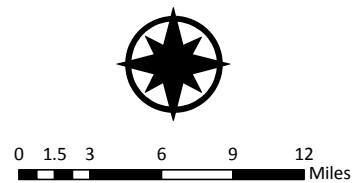
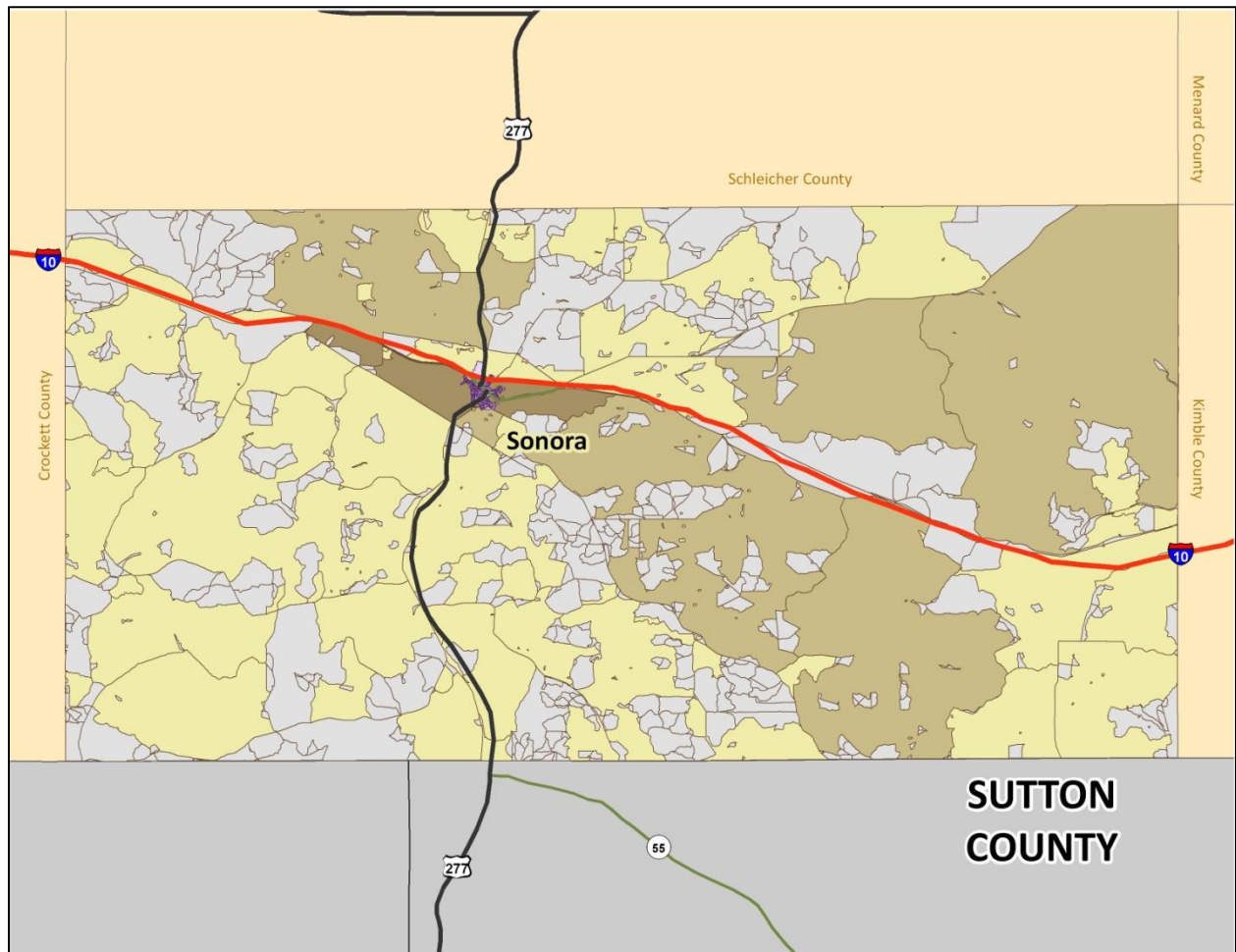




Figure 3-13. Population Distribution for Sutton County



LEGEND

Sonora	Sutton County	CVCOG County	Interstates
0	0	Non-Participating County	U.S. Highways
1 - 19	1 - 20	Surrounding Counties	State Highways
20 - 43	21 - 43		
44 - 84	44 - 84		
85 - 144	85 - 144		

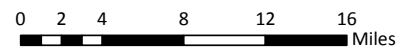
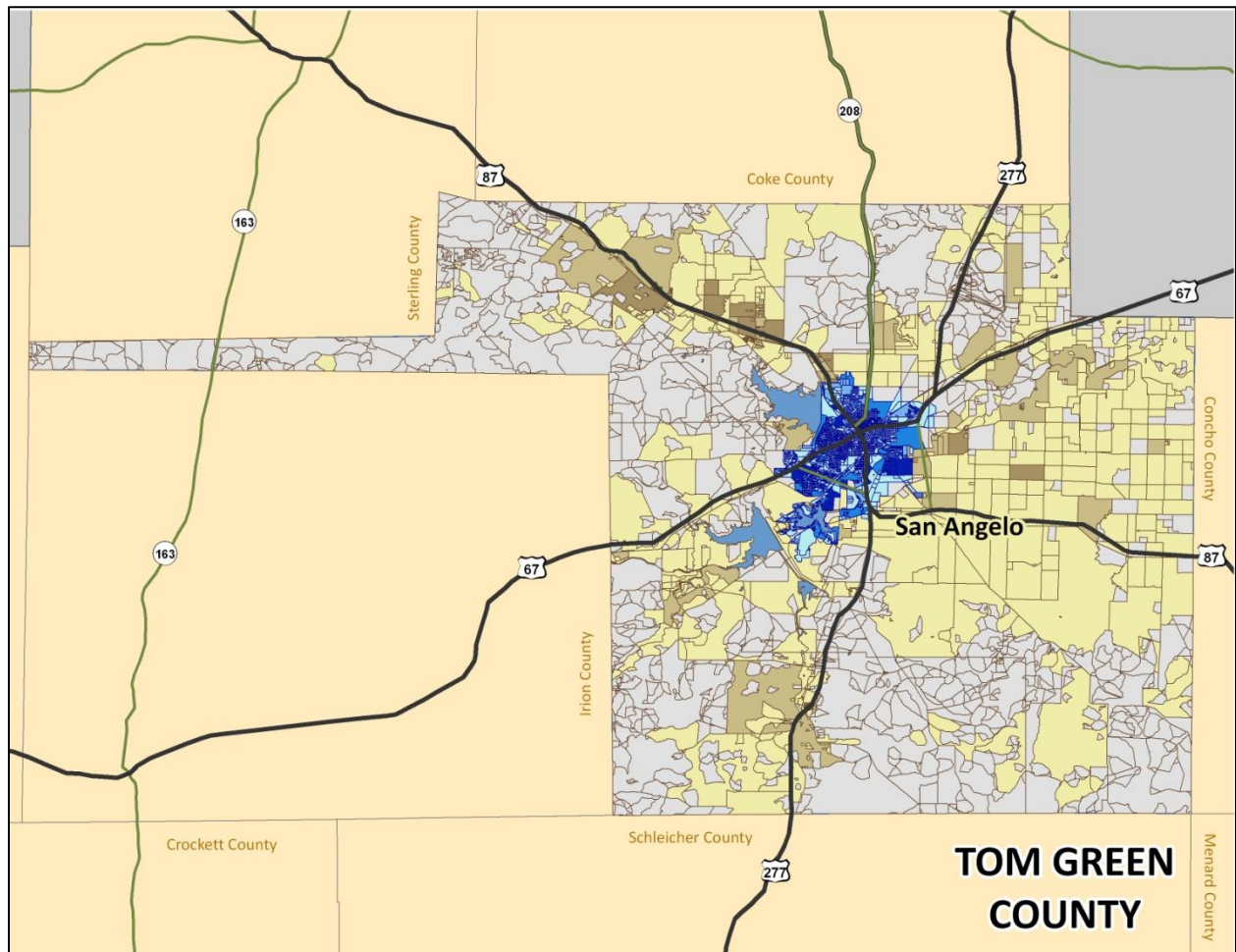
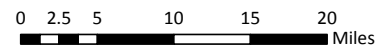


Figure 3-14. Population Distribution for Tom Green County



LEGEND

San Angelo	Tom Green County	CVCOG County	Interstates
0	0	Non-Participating County	U.S. Highways
1 - 56	1 - 53	Surrounding Counties	State Highways
57 - 136	54 - 136		
137 - 324	137 - 324		
325 - 795	325 - 795		



## 2010 Population

The CVCOG Region has a population of 154,192, according to the 2010 U.S. Census Bureau. Tom Green County is the largest county in the CVCOG, with 71.5 percent of the total population, with the City of San Angelo being the largest jurisdiction in the CVCOG Region with a population of 93,200. McCulloch County is the second largest with its population accounting for 5.4 percent of the CVCOG population. All of the other counties are small in comparison, each accounting for less than 3.0 percent of the total population.

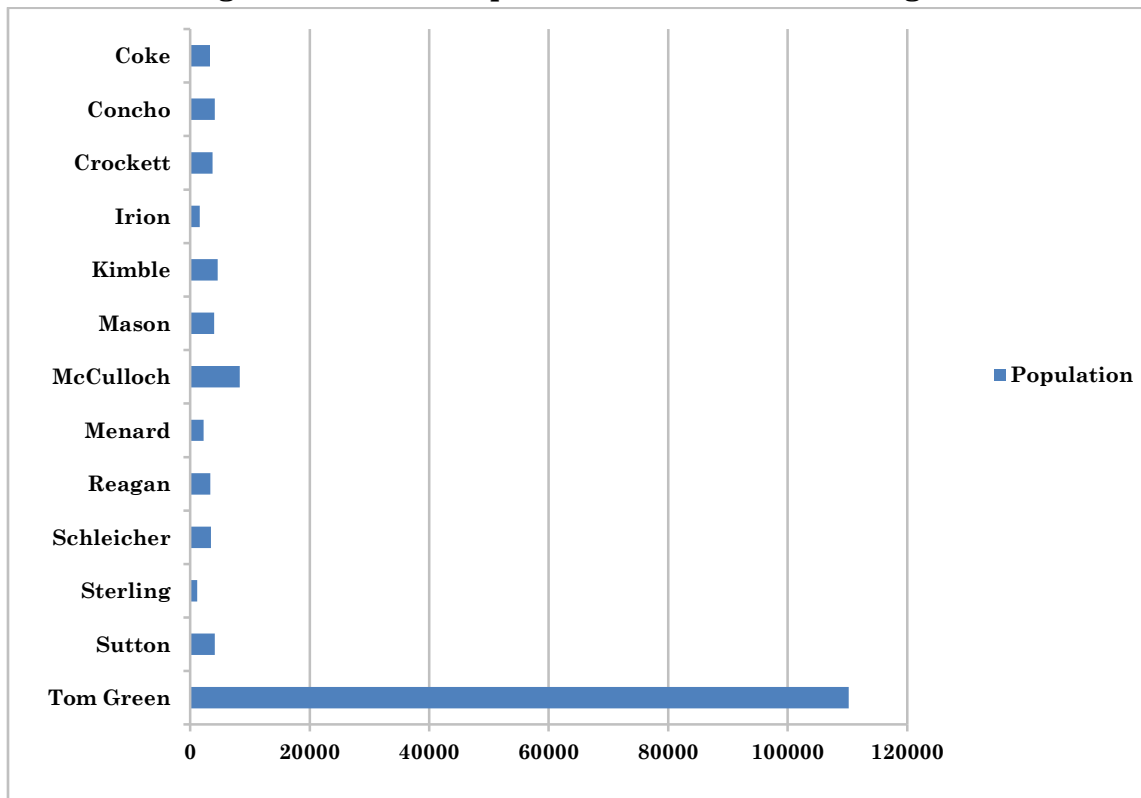
**Table 3-3. 2010 Population for the CVCOG Region**

JURISDICTION	2010 POPULATION		PERCENTAGE – CVCOG REGION	
<b>Coke County</b>	<b>3,320</b>		<b>2.2%</b>	
Bronte		999		30.1%
Robert Lee		1,049		31.6%
Uninc. Coke County		1,272		38.3%
<b>Concho County</b>	<b>4,087</b>		<b>2.7%</b>	
Eden		2,766		67.7%
Paint Rock		273		6.7%
Uninc. Concho County		1,048		25.6%
<b>Crockett County</b>	<b>3,719</b>		<b>2.4%</b>	
(No Incorporated Cities)				
Uninc. Crockett County		3,719		100.0%
<b>Irion County</b>	<b>1,599</b>		<b>1.0%</b>	
Mertzou		781		48.8%
Uninc. Irion County		818		51.2%
<b>Kimble County</b>	<b>4,607</b>		<b>3.0%</b>	
Junction		2,574		55.9%
Uninc. Kimble County		2,033		44.1%
<b>McCulloch County</b>	<b>8,283</b>		<b>5.4%</b>	
Brady		5,528		66.7%
Melvin		178		2.1%
Uninc. McCulloch County		2,577		31.1%
<b>Mason County</b>	<b>4,012</b>		<b>2.6%</b>	
<b>Menard County</b>	<b>2,242</b>		<b>1.5%</b>	
Menard		1,471		65.6%
Uninc. Menard County		771		34.4%
<b>Reagan County</b>	<b>3,367</b>		<b>2.2%</b>	

## Regional Profile

JURISDICTION	2010 POPULATION		PERCENTAGE – CVCOG REGION	
Big Lake		2,936		87.2%
Uninc. Reagan County		431		12.8%
<b>Schleicher County</b>	<b>3,461</b>		<b>2.2%</b>	
Eldorado		1,951		56.4%
Uninc. Schleicher County		1,510		43.6%
<b>Sterling County</b>	<b>1,143</b>		<b>0.7%</b>	
Sterling City		888		77.7%
Uninc. Sterling County		255		22.3%
<b>Sutton County</b>	<b>4,128</b>		<b>2.7%</b>	
Sonora		3,027		73.3%
Uninc. Sutton County		1,101		26.7%
<b>Tom Green County</b>	<b>110,224</b>		<b>71.5%</b>	
San Angelo		93,200		84.6%
Uninc. Tom Green County		17,024		15.4%
<b>TOTALS FOR STUDY AREA</b>		<b>154,192</b>		<b>100%</b>

Figure 3-15. 2010 Population for the CVCOG Region



## Population Growth

The CVCOG Region experienced an increase in population between 1980 and 2010 by 19.5 percent or 25,185 people. The counties of Concho, Irion, Kimble, Schleicher, and Tom Green all exhibited a significant increase in population between 1980 and 2010 by 13.4 percent or higher, with all continuing to have population growth between 2000 and 2010, except Irion County. Between 2000 and 2010, two of the counties experienced significant population losses of 14.1 percent or higher, while three counties saw their population decline slightly. During that same time period, McCulloch, Mason, Reagan, and Sutton Counties had population growth.

**Table 3-4. Population for the CVCOG Region, 1980 – 2010**

COUNTY	1980	1990	2000	2010	POP CHANGE 1980-2010	PERCENT OF CHANGE	POP CHANGE 2000-2010	PERCENT OF CHANGE
Coke	3,196	3,424	3,864	3,320	124	3.9%	-544	-14.1%
Concho	2,915	3,044	3,966	4,087	1,172	40.2%	121	3.1%
Crockett	4,608	4,078	4,099	3,719	-889	-19.3%	-380	-9.3%
Irion	1,386	1,629	1,771	1,599	213	15.4%	-172	-9.7%
Kimble	4,063	4,122	4,468	4,607	544	13.4%	139	3.1%
Mason	3,683	3,423	3,738	4,012	329	8.9%	274	7.3%
McCulloch	8,735	8,778	8,205	8,283	-452	-5.2%	78	1.0%
Menard	2,346	2,252	2,360	2,242	-104	-4.4%	-118	-5.0%
Reagan	4,135	4,514	3,326	3,367	-768	-18.6%	41	1.2%
Schleicher	2,820	2,990	2,935	3,461	641	22.7%	526	17.9%
Sterling	1,206	1,438	1,393	1,143	-63	-5.2%	-250	-17.9%
Sutton	5,130	4,135	4,077	4,128	-1,002	-19.5%	51	1.3%
Tom Green	84,784	98,458	104,010	110,224	25,440	30.0%	6,214	6.0%
<b>TOTALS FOR STUDY AREA</b>	<b>129,007</b>	<b>142,285</b>	<b>148,212</b>	<b>154,192</b>	<b>25,185</b>	<b>19.5%</b>	<b>5,980</b>	<b>4.0%</b>

## Age

The median age of persons living in the CVCOG Region varies for the different counties ranging from 32 years of age to 48 years of age, according to the 2010 U.S. Census Bureau. Reagan County has the highest percentage of persons under the age of 18, with 30.8 percent of the population. The county with the highest percentage of persons 65 years of age and older is Menard County, with 26.8 percent of the population.

**Table 3-5. Age of Population for the CVCOG Region**

JURISDICTION	MEDIAN AGE	UNDER 18	AGE 18 TO 24	AGE 25 TO 34	AGE 35 TO 44	AGE 45 TO 54	AGE 55 TO 64	AGE 65 TO 74	AGE 75 TO 84	AGE 85+
<b>Coke County</b>	<b>48.4</b>	<b>21.1%</b>	<b>5.3%</b>	<b>8.8%</b>	<b>9.4%</b>	<b>15.0%</b>	<b>14.4%</b>	<b>14.4%</b>	<b>9.0%</b>	<b>2.6%</b>
Bronte	41.3	27.9%	4.9%	10.2%	12.0%	12.5%	11.3%	10.3%	7.2%	3.6%
Robert Lee	45.8	22.6%	6.6%	10.7%	9.1%	14.7%	11.0%	11.6%	11.2%	2.7%
<b>Concho County</b>	<b>41.4</b>	<b>14.1%</b>	<b>6.7%</b>	<b>17.1%</b>	<b>19.8%</b>	<b>16.4%</b>	<b>12.3%</b>	<b>8.3%</b>	<b>3.9%</b>	<b>1.5%</b>
Eden	38.9	11.6%	7.8%	21.6%	24.8%	16.5%	9.5%	4.6%	2.3%	1.2%
Paint Rock	40.3	28.6%	6.2%	9.5%	13.6%	17.2%	12.8%	7.7%	3.7%	0.7%
<b>Crockett County</b>	<b>39.1</b>	<b>26.7%</b>	<b>6.5%</b>	<b>11.9%</b>	<b>12.0%</b>	<b>15.1%</b>	<b>13.1%</b>	<b>8.5%</b>	<b>4.5%</b>	<b>1.7%</b>
(No Incorporated Cities)										
<b>Irion County</b>	<b>45.1</b>	<b>23.0%</b>	<b>6.8%</b>	<b>8.3%</b>	<b>11.7%</b>	<b>18.6%</b>	<b>13.4%</b>	<b>10.5%</b>	<b>6.1%</b>	<b>1.6%</b>
Mertzon	40.9	25.7%	7.3%	9.1%	12.9%	18.2%	11.5%	8.2%	5.8%	1.3%
<b>Kimble County</b>	<b>48.6</b>	<b>20.4%</b>	<b>5.3%</b>	<b>9.1%</b>	<b>10.4%</b>	<b>14.4%</b>	<b>17.7%</b>	<b>13.0%</b>	<b>7.4%</b>	<b>2.5%</b>
Junction	40.8	25.1%	6.8%	11.5%	11.0%	14.2%	13.3%	9.9%	5.4%	2.8%
<b>McCulloch County</b>	<b>43.5</b>	<b>24.6%</b>	<b>6.4%</b>	<b>9.7%</b>	<b>11.1%</b>	<b>13.7%</b>	<b>14.6%</b>	<b>10.4%</b>	<b>6.9%</b>	<b>2.6%</b>
Brady	51.5	19.1%	3.9%	10.1%	7.3%	15.2%	16.9%	14.6%	10.7%	2.2%
Melvin	50.4	19.6%	5.7%	8.6%	8.5%	15.2%	15.7%	14.3%	9.1%	3.4%
<b>Menard County</b>	<b>46.9</b>	<b>22.6%</b>	<b>6.3%</b>	<b>9.9%</b>	<b>9.3%</b>	<b>15.2%</b>	<b>14.5%</b>	<b>10.3%</b>	<b>7.9%</b>	<b>4.0%</b>
Menard	33.5	30.0%	8.5%	13.4%	12.3%	14.6%	10.8%	5.9%	3.6%	0.9%
<b>Reagan County</b>	<b>32.5</b>	<b>30.8%</b>	<b>9.0%</b>	<b>13.5%</b>	<b>12.4%</b>	<b>14.2%</b>	<b>10.2%</b>	<b>5.7%</b>	<b>3.5%</b>	<b>0.8%</b>
Big Lake	33.7	31.9%	7.7%	11.8%	11.4%	11.9%	12.5%	7.5%	4.3%	0.9%
<b>Schleicher County</b>	<b>34.6</b>	<b>29.9%</b>	<b>7.4%</b>	<b>13.1%</b>	<b>11.7%</b>	<b>12.9%</b>	<b>12.6%</b>	<b>6.9%</b>	<b>4.6%</b>	<b>0.8%</b>
Eldorado	41.8	24.4%	7.6%	12.2%	10.1%	16.1%	13.1%	7.4%	6.6%	2.4%
<b>Sterling County</b>	<b>42.5</b>	<b>24.5%</b>	<b>7.8%</b>	<b>10.9%</b>	<b>10.4%</b>	<b>17.3%</b>	<b>12.3%</b>	<b>7.1%</b>	<b>6.8%</b>	<b>2.9%</b>
Sterling City	38.7	27.5%	7.3%	10.9%	12.5%	14.8%	13.2%	7.5%	5.1%	1.2%
<b>Sutton County</b>	<b>35.4</b>	<b>30.0%</b>	<b>7.9%</b>	<b>11.6%</b>	<b>13.1%</b>	<b>14.3%</b>	<b>10.6%</b>	<b>6.6%</b>	<b>4.9%</b>	<b>1.0%</b>
Sonora	34.3	23.5%	13.9%	13.4%	11.0%	13.1%	11.3%	7.2%	4.8%	1.9%
<b>Tom Green County</b>	<b>32.8</b>	<b>23.4%</b>	<b>15.0%</b>	<b>14.1%</b>	<b>10.7%</b>	<b>12.4%</b>	<b>10.7%</b>	<b>6.9%</b>	<b>4.9%</b>	<b>2.0%</b>
San Angelo	48.4	21.1%	5.3%	8.8%	9.4%	15.0%	14.4%	14.4%	9.0%	2.6%

## Ethnicity

The CVCOG Region is ethnically diverse varying considerably among the counties. Crockett County has the highest population of residents whose ethnicity is Hispanic alone at 63.2 percent; they also have the lowest percentage of residents with an ethnicity of white alone at 35.3 percent. Coke County’s population is mainly of white alone ethnicity at 79.9 percent. A relatively small percentage of African Americans, American Indians, Asians, and Native Hawaiians reside in the CVCOG Region.

**Table 3-6. Ethnicity for the CVCOG Region**

JURISDICTION	HISPANIC ALONE	WHITE ALONE	AFRICAN AMERICAN ALONE	AMERICAN INDIAN & ALASKAN NATIVE ALONE	ASIAN ALONE	NATIVE HAWAIIAN/ PACIFIC ISLANDER ALONE	OTHER RACE ALONE	MULTI-RACIAL
<b>Coke County</b>	<b>18.1%</b>	<b>79.8%</b>	<b>0.2%</b>	<b>0.6%</b>	<b>0.2%</b>	<b>0.0%</b>	<b>0.0%</b>	<b>1.1%</b>
Bronte	22.3%	75.4%	0.6%	0.3%	0.1%	0.1%	0.0%	1.2%
Robert Lee	23.3%	74.1%	0.1%	1.1%	0.0%	0.0%	0.0%	1.4%
<b>Concho County</b>	<b>53.2%</b>	<b>44.3%</b>	<b>1.4%</b>	<b>0.3%</b>	<b>0.3%</b>	<b>0.1%</b>	<b>0.0%</b>	<b>0.3%</b>
Eden	68.5%	28.5%	2.0%	0.2%	0.4%	0.2%	0.1%	0.2%
Paint Rock	27.8%	68.5%	0.0%	1.8%	0.7%	0.0%	0.0%	1.1%
<b>Crockett County</b>	<b>63.2%</b>	<b>35.3%</b>	<b>0.3%</b>	<b>0.2%</b>	<b>0.3%</b>	<b>0.0%</b>	<b>0.1%</b>	<b>0.5%</b>
(No Incorporated Cities)								
<b>Irion County</b>	<b>25.5%</b>	<b>72.1%</b>	<b>0.7%</b>	<b>0.4%</b>	<b>0.2%</b>	<b>0.0%</b>	<b>0.0%</b>	<b>1.1%</b>
Mertzon	35.9%	61.1%	1.2%	0.1%	0.1%	0.0%	0.0%	1.7%
<b>Kimble County</b>	<b>23.4%</b>	<b>74.9%</b>	<b>0.3%</b>	<b>0.4%</b>	<b>0.4%</b>	<b>0.1%</b>	<b>0.1%</b>	<b>0.4%</b>
Junction	33.1%	65.6%	0.2%	0.1%	0.2%	0.0%	0.2%	0.5%
<b>McCulloch County</b>	<b>29.9%</b>	<b>67.2%</b>	<b>1.6%</b>	<b>0.3%</b>	<b>0.3%</b>	<b>0.0%</b>	<b>0.1%</b>	<b>0.5%</b>
Melvin	34.3%	65.2%	0.0%	0.6%	0.0%	0.0%	0.0%	0.0%
<b>Menard County</b>	<b>35.2%</b>	<b>63.6%</b>	<b>0.5%</b>	<b>0.3%</b>	<b>0.1%</b>	<b>0.0%</b>	<b>0.0%</b>	<b>0.3%</b>
Menard	45.9%	53.2%	0.4%	0.3%	0.0%	0.0%	0.1%	0.1%
<b>Reagan County</b>	<b>60.9%</b>	<b>36.2%</b>	<b>1.9%</b>	<b>0.2%</b>	<b>0.0%</b>	<b>0.0%</b>	<b>0.0%</b>	<b>0.7%</b>
Big Lake	62.4%	34.7%	2.0%	0.2%	0.0%	0.0%	0.0%	0.6%
<b>Schleicher County</b>	<b>44.4%</b>	<b>54.1%</b>	<b>0.9%</b>	<b>0.0%</b>	<b>0.1%</b>	<b>0.0%</b>	<b>0.0%</b>	<b>0.5%</b>

## Regional Profile

JURISDICTION	HISPANIC ALONE	WHITE ALONE	AFRICAN AMERICAN ALONE	AMERICAN INDIAN & ALASKAN NATIVE ALONE	ASIAN ALONE	NATIVE HAWAIIAN/ PACIFIC ISLANDER ALONE	OTHER RACE ALONE	MULTI-RACIAL
Eldorado	61.3%	37.0%	1.0%	0.1%	0.2%	0.0%	0.0%	0.5%
<b>Sterling County</b>	<b>31.9%</b>	<b>64.1%</b>	<b>1.1%</b>	<b>1.1%</b>	<b>0.0%</b>	<b>0.0%</b>	<b>0.2%</b>	<b>1.5%</b>
Sterling City	36.5%	59.8%	1.5%	0.8%	0.0%	0.0%	0.2%	1.2%
<b>Sutton County</b>	<b>59.6%</b>	<b>39.7%</b>	<b>0.1%</b>	<b>0.0%</b>	<b>0.1%</b>	<b>0.0%</b>	<b>0.2%</b>	<b>0.2%</b>
Sonora	62.7%	36.8%	0.1%	0.0%	0.1%	0.0%	0.1%	0.2%
<b>Tom Green County</b>	<b>35.7%</b>	<b>57.9%</b>	<b>3.6%</b>	<b>0.4%</b>	<b>0.9%</b>	<b>0.1%</b>	<b>0.1%</b>	<b>1.3%</b>
San Angelo	38.5%	54.4%	4.2%	0.4%	1.1%	0.1%	0.1%	1.4%

## Education

The level of education varies among the different jurisdictions, according to the U.S. Census Bureau 2005-2009 American Community Survey 5-year estimates. Kimble County has the highest population of people with a graduate or professional degree with 10.6 percent. In the CVCOG Region, the highest percentage of population with a Bachelors Degree resides in Sterling County with 19.8 percent of their population. Table 3-7 depicts the level of education data for the CVCOG Region.

**Table 3-7. Level of Education for the CVCOG Region**

JURISDICTION	GRADUATE OR PROFESSIONAL DEGREE	BACHELORS DEGREE	ASSOCIATES DEGREE	SOME COLLEGE, NO DEGREE	HIGH SCHOOL GRADUATE	NO DIPLOMA
<b>Coke County</b>	<b>2.9%</b>	<b>8.4%</b>	<b>7.7%</b>	<b>22.8%</b>	<b>38.9%</b>	<b>19.2%</b>
Bronte	2.9%	8.8%	9.8%	21.9%	34.6%	22.0%
Robert Lee	3.1%	4.2%	7.4%	17.9%	45.7%	21.7%
<b>Concho County</b>	<b>3.3%</b>	<b>9.2%</b>	<b>5.2%</b>	<b>19.2%</b>	<b>37.0%</b>	<b>26.2%</b>
Eden	3.0%	9.3%	3.6%	17.0%	35.3%	31.9%
Paint Rock	0.6%	13.1%	8.0%	31.4%	24.0%	22.9%
<b>Crockett County</b>	<b>0.0%</b>	<b>12.0%</b>	<b>6.0%</b>	<b>15.1%</b>	<b>22.5%</b>	<b>44.4%</b>
(No Incorporated Cities)						
<b>Irion County</b>	<b>1.8%</b>	<b>10.4%</b>	<b>9.6%</b>	<b>13.1%</b>	<b>44.8%</b>	<b>20.2%</b>
Mertzon	2.0%	7.2%	8.1%	8.9%	41.8%	32.0%



## Regional Profile

JURISDICTION	GRADUATE OR PROFESSIONAL DEGREE	BACHELORS DEGREE	ASSOCIATES DEGREE	SOME COLLEGE, NO DEGREE	HIGH SCHOOL GRADUATE	NO DIPLOMA
<b>Kimble County</b>	<b>10.6%</b>	<b>10.9%</b>	<b>4.5%</b>	<b>25.6%</b>	<b>25.9%</b>	<b>22.5%</b>
Junction	7.3%	7.5%	2.5%	27.6%	24.8%	30.3%
<b>McCulloch County</b>	<b>5.5%</b>	<b>13.5%</b>	<b>3.7%</b>	<b>20.2%</b>	<b>32.6%</b>	<b>24.5%</b>
Brady	4.0%	11.5%	2.7%	21.1%	33.9%	26.8%
Melvin	0.0%	2.0%	0.0%	24.0%	36.0%	38.0%
<b>Menard County</b>	<b>2.9%</b>	<b>7.5%</b>	<b>0.9%</b>	<b>28.5%</b>	<b>38.2%</b>	<b>22.1%</b>
Menard	2.3%	5.3%	1.4%	23.1%	41.4%	26.6%
<b>Reagan County</b>	<b>3.5%</b>	<b>5.5%</b>	<b>4.4%</b>	<b>18.3%</b>	<b>32.6%</b>	<b>35.6%</b>
Big Lake	4.0%	4.5%	3.6%	16.5%	35.4%	35.9%
<b>Schleicher County</b>	<b>1.9%</b>	<b>16.0%</b>	<b>4.3%</b>	<b>18.2%</b>	<b>31.1%</b>	<b>28.5%</b>
Eldorado	1.9%	13.0%	5.1%	15.6%	31.6%	32.7%
<b>Sterling County</b>	<b>2.2%</b>	<b>19.8%</b>	<b>4.0%</b>	<b>15.2%</b>	<b>31.2%</b>	<b>27.6%</b>
Sterling City	2.3%	14.0%	5.2%	15.1%	34.8%	28.6%
<b>Sutton County</b>	<b>3.7%</b>	<b>12.3%</b>	<b>3.5%</b>	<b>18.5%</b>	<b>28.5%</b>	<b>33.5%</b>
Sonora	2.9%	11.2%	2.7%	19.2%	33.6%	30.4%
<b>Tom Green County</b>	<b>6.0%</b>	<b>15.3%</b>	<b>6.7%</b>	<b>23.1%</b>	<b>29.1%</b>	<b>19.8%</b>
San Angelo	6.1%	15.4%	6.7%	23.1%	29.0%	19.6%

## Household Income

The data for household income is reported from the 2005-2009 5-year estimates of the U.S. Census Bureau's American Community Survey. The median household income for the State of Texas is \$48,199 and the median household income for the United States is \$51,425. The jurisdiction with the highest median household income in the CVCOG Region is the City of Sonora in Sutton County, which is \$57,156. There are two other cities and towns whose median household income is higher than the state's. These jurisdictions are Big Lake and Eldorado. Statistics indicate that 13.2 percent of the families residing in the State of Texas are in poverty. Five counties in the CVCOG Region have a higher percentage of residents living in poverty.

## Regional Profile

**Table 3-8. Household Income for the CVCOG Region**

JURISDICTION	MEDIAN FAMILY INCOME	AT OR ABOVE \$200K	\$150,000 TO \$199,999	\$100,000 TO \$149,999	\$75,000 TO \$99,999	\$50,000 TO \$74,999	\$35,000 TO \$49,999	\$25,000 TO \$34,999	\$15,000 TO \$24,999	\$10,000 TO \$14,999	LESS THAN \$10,000	BELOW POVERTY LEVEL
<b>Coke County</b>	<b>\$33,375</b>	<b>0.5%</b>	<b>1.0%</b>	<b>3.2%</b>	<b>7.5%</b>	<b>19.0%</b>	<b>17.0%</b>	<b>10.1%</b>	<b>22.0%</b>	<b>8.4%</b>	<b>11.3%</b>	<b>11.3%</b>
Bronte	\$34,000	0.0%	0.0%	2.9%	7.9%	19.9%	18.8%	12.7%	21.9%	8.4%	7.5%	13.4%
Robert Lee	\$24,455	0.0%	0.0%	2.3%	8.9%	12.0%	17.6%	7.7%	22.0%	11.7%	17.8%	13.1%
<b>Concho County</b>	<b>\$45,625</b>	<b>0.4%</b>	<b>3.6%</b>	<b>12.4%</b>	<b>12.0%</b>	<b>16.8%</b>	<b>12.6%</b>	<b>11.7%</b>	<b>14.6%</b>	<b>6.0%</b>	<b>9.8%</b>	<b>12.9%</b>
Eden	\$41,875	0.0%	0.4%	14.7%	13.7%	16.0%	11.4%	4.7%	20.0%	8.8%	10.4%	10.9%
Paint Rock	\$47,917	0.0%	14.7%	1.8%	3.7%	27.5%	15.6%	18.3%	13.8%	2.8%	1.8%	21.2%
<b>Crockett County</b>	<b>\$47,143</b>	<b>4.9%</b>	<b>1.7%</b>	<b>6.4%</b>	<b>12.9%</b>	<b>15.1%</b>	<b>19.1%</b>	<b>14.8%</b>	<b>6.5%</b>	<b>9.9%</b>	<b>8.6%</b>	<b>14.5%</b>
(No Incorporated Cities)												
<b>Irion County</b>	<b>\$43,536</b>	<b>2.9%</b>	<b>3.7%</b>	<b>9.8%</b>	<b>16.8%</b>	<b>11.1%</b>	<b>22.0%</b>	<b>12.2%</b>	<b>11.6%</b>	<b>6.7%</b>	<b>3.2%</b>	<b>1.0%</b>
Mertzon	\$37,500	1.6%	0.0%	0.0%	18.7%	7.0%	37.3%	10.1%	13.6%	7.6%	4.1%	2.3%
<b>Kimble County</b>	<b>\$42,188</b>	<b>3.0%</b>	<b>7.1%</b>	<b>7.6%</b>	<b>8.9%</b>	<b>17.3%</b>	<b>18.2%</b>	<b>12.4%</b>	<b>9.4%</b>	<b>8.8%</b>	<b>7.4%</b>	<b>11.0%</b>
Junction	\$35,947	1.4%	3.0%	3.9%	7.2%	15.7%	20.1%	16.3%	13.6%	8.3%	10.6%	15.7%
<b>McCulloch County</b>	<b>\$36,495</b>	<b>2.2%</b>	<b>3.2%</b>	<b>5.9%</b>	<b>11.5%</b>	<b>12.3%</b>	<b>15.8%</b>	<b>11.9%</b>	<b>18.1%</b>	<b>8.2%</b>	<b>11.0%</b>	<b>16.3%</b>
Melvin	\$31,563	0.0%	6.6%	0.0%	3.3%	11.5%	19.7%	13.1%	18.0%	14.8%	13.1%	0.0%
<b>Menard County</b>	<b>\$31,016</b>	<b>3.8%</b>	<b>3.4%</b>	<b>4.6%</b>	<b>5.6%</b>	<b>18.8%</b>	<b>11.7%</b>	<b>9.1%</b>	<b>16.1%</b>	<b>8.3%</b>	<b>18.6%</b>	<b>16.7%</b>
Menard	\$25,039	1.0%	1.1%	0.6%	5.9%	15.0%	15.5%	10.9%	17.9%	7.5%	24.5%	24.5%
<b>Reagan County</b>	<b>\$51,619</b>	<b>0.0%</b>	<b>6.8%</b>	<b>6.8%</b>	<b>14.6%</b>	<b>28.4%</b>	<b>22.9%</b>	<b>4.5%</b>	<b>8.9%</b>	<b>1.3%</b>	<b>5.8%</b>	<b>7.2%</b>
Big Lake	\$51,434	0.0%	3.7%	5.7%	15.9%	31.4%	25.4%	5.2%	8.0%	1.0%	3.7%	4.5%
<b>Schleicher County</b>	<b>\$52,872</b>	<b>1.6%</b>	<b>1.5%</b>	<b>15.7%</b>	<b>10.8%</b>	<b>25.1%</b>	<b>11.8%</b>	<b>10.2%</b>	<b>8.5%</b>	<b>3.3%</b>	<b>11.4%</b>	<b>13.3%</b>
Eldorado	\$49,948	1.0%	0.5%	12.5%	10.7%	25.3%	12.8%	9.4%	10.6%	2.3%	15.1%	19.0%
<b>Sterling County</b>	<b>\$38,750</b>	<b>0.0%</b>	<b>3.6%</b>	<b>14.5%</b>	<b>6.5%</b>	<b>14.0%</b>	<b>16.5%</b>	<b>13.1%</b>	<b>12.9%</b>	<b>6.5%</b>	<b>12.5%</b>	<b>15.1%</b>
Sterling City	\$32,813	0.0%	2.5%	11.8%	7.6%	14.9%	11.2%	15.7%	12.9%	8.1%	15.2%	19.1%
<b>Sutton County</b>	<b>\$54,557</b>	<b>1.9%</b>	<b>5.6%</b>	<b>9.2%</b>	<b>10.1%</b>	<b>28.2%</b>	<b>14.8%</b>	<b>7.6%</b>	<b>10.5%</b>	<b>2.7%</b>	<b>9.3%</b>	<b>11.5%</b>
Sonora	\$57,156	2.6%	5.3%	8.7%	13.8%	28.8%	15.8%	9.4%	7.8%	2.9%	4.9%	8.1%
<b>Tom Green County</b>	<b>\$40,753</b>	<b>1.9%</b>	<b>1.3%</b>	<b>8.5%</b>	<b>10.7%</b>	<b>19.5%</b>	<b>15.2%</b>	<b>13.2%</b>	<b>15.2%</b>	<b>6.8%</b>	<b>7.8%</b>	<b>12.3%</b>

## Regional Profile

JURISDICTION	MEDIAN FAMILY INCOME	AT OR ABOVE \$200K	\$150,000 TO \$199,999	\$100,000 TO \$149,999	\$75,000 TO \$99,999	\$50,000 TO \$74,999	\$35,000 TO \$49,999	\$25,000 TO \$34,999	\$15,000 TO \$24,999	\$10,000 TO \$14,999	LESS THAN \$10,000	BELOW POVERTY LEVEL
San Angelo	\$38,777	1.8%	1.0%	7.7%	10.1%	19.2%	15.4%	13.7%	15.6%	7.1%	8.5%	13.9%

## Asset Inventory

Provided in Table 3-9 is the total estimated dollar exposure by key occupancy. This demographic and building stock data form the basis of large portions of this risk assessment and were derived from HAZUS-MH MR4. Commercial building stock data has been updated to Dun & Bradstreet 2006, building valuations have been updated to R.S. Means 2006, and building counts are based on census housing unit counts.

HAZUS-MH MR4 estimates there are around 73,000 buildings in the study area, with an aggregate value of \$8.8 billion. The buildings are broken down by occupancy, which is broken down with residential making up 95 percent, commercial making up 4.0 percent, industrial making up 1.0 percent and essential facilities making up 0.3 percent of the building inventory.

**Table 3-9. Estimated Building Distribution by Key Occupancy by Jurisdiction**

JURISDICTION	RESIDENTIAL		COMMERCIAL		INDUSTRIAL		ESSENTIAL FACILITIES	
	Number	Value	Number	Value	Number	Value	Number	Value
<b>Coke County</b>	<b>3,454</b>	<b>\$260,965,000</b>	<b>69</b>	<b>\$15,165,000</b>	<b>18</b>	<b>\$4,151,000</b>	<b>12</b>	<b>\$14,811,000</b>
Bronte	610	\$46,175,000	19	\$4,317,000	4	\$572,000	4	\$5,959,000
Robert Lee	941	\$58,440,000	21	\$5,921,000	4	\$870,000	7	\$7,606,000
Uninc. Coke County	1,903	\$156,350,000	29	\$4,927,000	10	\$2,709,000	1	\$1,246,000
<b>Concho County</b>	<b>1,860</b>	<b>\$146,542,000</b>	<b>54</b>	<b>\$20,429,000</b>	<b>13</b>	<b>\$7,991,000</b>	<b>14</b>	<b>\$17,235,000</b>
Eden	709	\$70,726,000	29	\$8,983,000	6	\$7,038,000	8	\$12,678,000
Paint Rock	172	\$9,407,000	2	\$854,000	1	\$58,000	2	\$1,762,000
Uninc. Concho County	979	\$66,409,000	23	\$592,000	6	\$895,000	4	\$2,795,000
<b>Crockett County</b>	<b>2,673</b>	<b>\$203,021,000</b>	<b>103</b>	<b>\$41,899,000</b>	<b>25</b>	<b>\$7,504,000</b>	<b>6</b>	<b>\$9,382,000</b>
(No Incorporated Cities)								
<b>Irion County</b>	<b>1,100</b>	<b>\$87,751,000</b>	<b>32</b>	<b>\$14,958,000</b>	<b>13</b>	<b>\$3,572,000</b>	<b>3</b>	<b>\$5,209,000</b>
Mertzon	450	\$29,214,000	19	\$5,211,000	6	\$792,000	0	\$0
Uninc. Irion County	650	\$58,537,000	13	\$9,747,000	7	\$2,780,000	3	\$5,209,000
<b>Kimble County</b>	<b>3,835</b>	<b>\$281,753,000</b>	<b>114</b>	<b>\$32,598,000</b>	<b>35</b>	<b>\$18,374,000</b>	<b>6</b>	<b>\$1,367,500</b>
Junction	1,708	\$106,456,000	96	\$27,264,000	22	\$10,386,000	6	\$1,367,500
Uninc. Kimble County	2,127	\$175,297,000	18	\$8,334,000	13	\$7,988,000	0	\$0

## Regional Profile

JURISDICTION	RESIDENTIAL		COMMERCIAL		INDUSTRIAL		ESSENTIAL FACILITIES	
	Number	Value	Number	Value	Number	Value	Number	Value
<b>McCulloch County</b>	<b>5,174</b>	<b>\$352,119,000</b>	<b>208</b>	<b>\$59,298,000</b>	<b>44</b>	<b>\$14,825,000</b>	<b>14</b>	<b>\$38,078,000</b>
Melvin	100	\$8,627,000	1	\$70,000	0	\$0	0	\$0
Uninc. McCulloch County	5,074	\$343,492,000	207	\$59,228,000	44	\$14,825,000	14	\$38,078,000
<b>Menard County</b>	<b>1,865</b>	<b>\$133,880,000</b>	<b>23</b>	<b>\$7,733,000</b>	<b>9</b>	<b>\$1,100,000</b>	<b>5</b>	<b>\$5,112,000</b>
Menard	1,124	\$66,088,000	15	\$6,233,000	7	\$876,000	5	\$5,112,000
Uninc. Menard County	738	\$67,792,000	8	\$1,500,000	2	\$254,000	0	\$0
<b>Reagan County</b>	<b>1,997</b>	<b>\$128,232,000</b>	<b>81</b>	<b>\$24,596,000</b>	<b>29</b>	<b>\$12,555,000</b>	<b>7</b>	<b>\$11,204,000</b>
Big Lake	1,398	\$103,847,000	71	\$22,956,000	23	\$7,812,000	7	\$11,204,000
Uninc. Reagan County	599	\$24,385,000	10	\$1,640,000	6	\$4743	0	\$0
<b>Schleicher County</b>	<b>1,994</b>	<b>\$134,153,000</b>	<b>56</b>	<b>\$18,971,000</b>	<b>10</b>	<b>\$3,124,000</b>	<b>7</b>	<b>\$10,456,000</b>
Eldorado	1,360	\$79,275,000	33	\$10,848,000	6	\$1,518,000	2	\$2,337,000
Uninc. Schleicher County	634	\$54,878,000	23	\$8,123,000	4	\$1,606	5	\$8,119,000
<b>Sterling County</b>	<b>901</b>	<b>\$69,708,000</b>	<b>25</b>	<b>\$9,080,000</b>	<b>10</b>	<b>\$3,138,000</b>	<b>4</b>	<b>\$3,873,000</b>
Sterling City	656	\$54,148,000	17	\$5,425,000	8	\$2,571,000	4	\$3,873,000
Uninc. Sterling County	251	\$15,560,000	8	\$3,655	2	\$567,000	0	\$0
<b>Sutton County</b>	<b>2,360</b>	<b>\$201,834,000</b>	<b>112</b>	<b>\$35,305,000</b>	<b>29</b>	<b>\$6,973,000</b>	<b>7</b>	<b>\$17,292,000</b>
Sonora	1,476	\$119,877,000	83	\$21,115,000	23	\$4,876,000	7	\$17,292,000
Uninc. Sutton County	2,213	\$81,957	29	\$14,190,000	6	\$2,097,000	0	\$0
<b>Tom Green County</b>	<b>41,598</b>	<b>\$4,708,700,000</b>	<b>2,167</b>	<b>\$929,553,000</b>	<b>557</b>	<b>\$216,027,000</b>	<b>117</b>	<b>\$400,375,000</b>
San Angelo	34,189	\$4,047,547,000	1,884	\$858,310,000	433	\$190,929,000	54	\$326,105,000
Uninc. Tom Green County	7,409	\$661,153,000	283	\$71,243	124	\$25,098	63	\$74,270,000
<b>TOTALS FOR STUDY AREA</b>	<b>68,811</b>	<b>\$6,708,658,000</b>	<b>3,044</b>	<b>\$1,209,585,000</b>	<b>792</b>	<b>\$299,334,000</b>	<b>202</b>	<b>\$534,394,500</b>

## Future Development

CVCOG provides assistance to the local governments in its 13-county statutory district, which includes Coke, Concho, Crockett, Irion, Kimble, McCulloch, Mason, Menard, Reagan, Schleicher, Sterling, Sutton and Tom Green counties (not all of which are participating in this risk assessment). CVCOG administers a program for community and economic development assistance funds, where they assist local cities and counties in acquiring

## Regional Profile

information about available grants and the information needed for the grants to help with future development.

To better understand how future growth and developments in this region might affect hazard vulnerability, it is useful to consider population growth, occupied and vacant land, the potential for future development in hazard areas, and current planning and growth management efforts.

This section includes an analysis of the projected population change, the number of permits that have been issued throughout the region and economic impacts.

Population projections from 2010 to 2040 are listed in Table 3-10 and illustrated in Figures 3-16a and 3-16b, as provided by the Office of the State Demographer, Texas State Data Center, and Institute for Demographic and Socioeconomic Research. Population projects were based on a 0.5 scenario growth rate, which is 50 percent of the population growth rate that occurred during 1990-2000.

**Table 3-10. CVCOG Study Area Population Projections**

COUNTY	LAND AREA	2010		2020		2030		2040	
		Population							
		Total Number	Density (Land Area, SQ MI)	Total Number	Density (Land Area, SQ MI)	Total Number	Density (Land Area, SQ MI)	Total Number	Density (Land Area, SQ MI)
Coke	915.07	3,320	4	3,813	4	3,598	4	3,394	4
Concho	988.00	4,087	4	4,095	4	3,853	4	3,368	3
Crockett	2,808.63	3,719	1	4,733	2	4,696	2	4,516	2
Irion	1,053.06	1,599	2	1,789	2	1,651	2	1,429	1
Kimble	1,254.69	4,607	4	4,572	4	4,411	4	4,261	3
McCulloch	933.10	8,283	9	8,722	9	8,685	9	8,484	9
Menard	1,073.40	2,242	2	2,436	2	2,322	2	2,204	2
Reagan	904.53	3,367	4	4,166	5	4,364	5	4,380	5
Schleicher	1,178.20	3,461	3	3,349	3	3,396	3	3,323	3
Sterling	1,313.23	1,143	1	1,535	1	1,485	1	1,366	1
Sutton	924.65	4,128	4	4,883	5	4,937	5	4,930	5
Tom Green	1,456.73	110,224	76	117,729	81	121,484	83	123,394	85

Figure 3-16a. CVCOG Study Area Population Projections

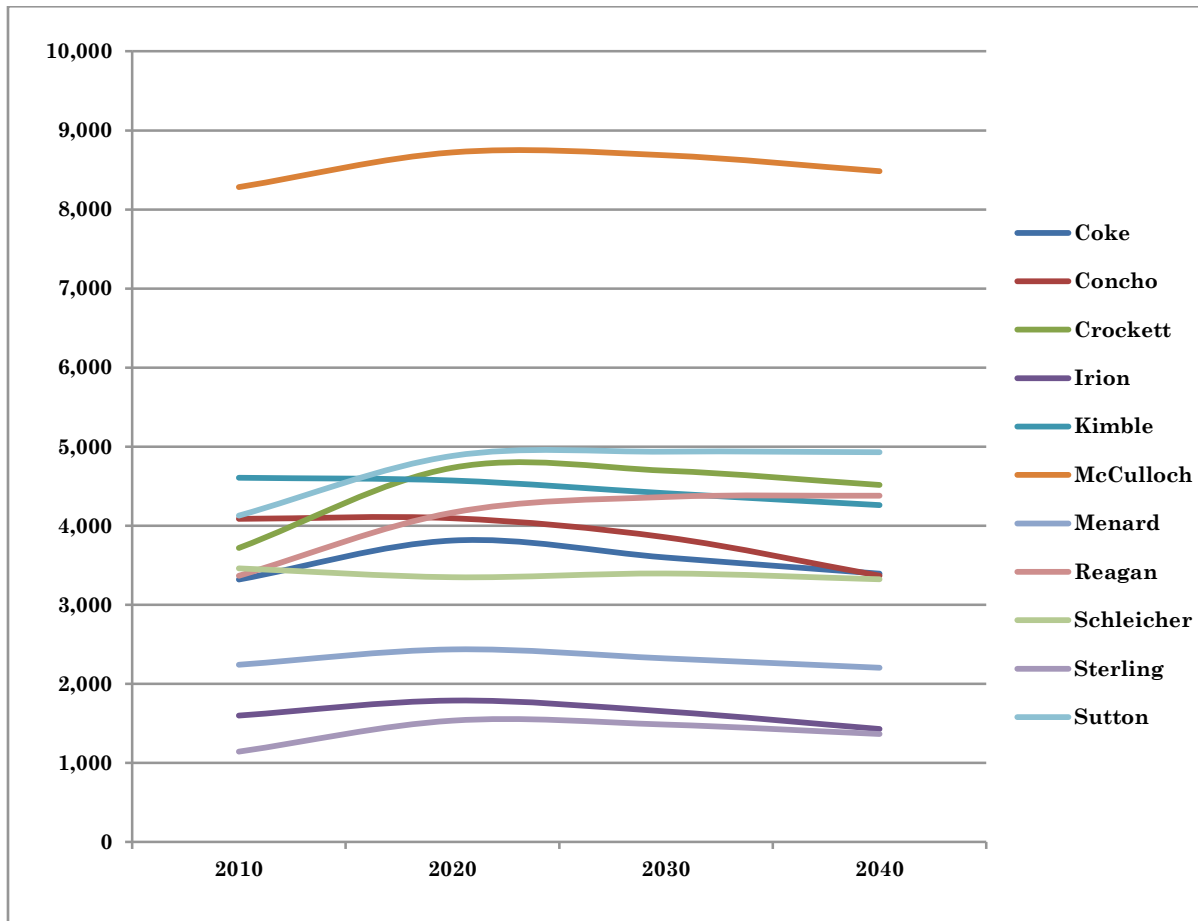
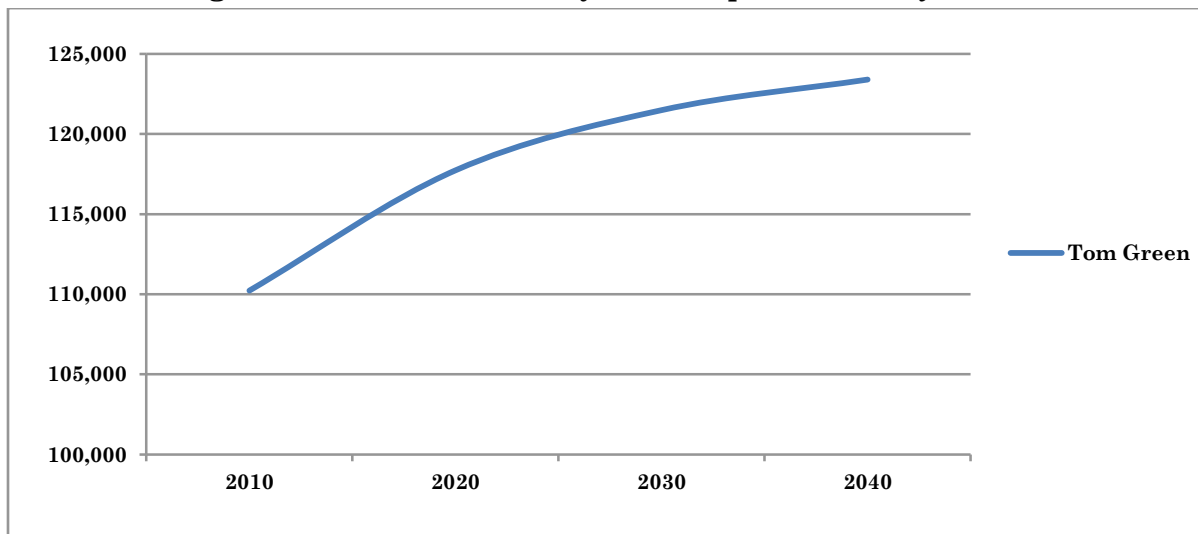


Figure 3-16b. CVCOG Study Area Population Projections



### **Economic Impacts**

The economy is vital to all infrastructures. CVCOG administers the Concho Valley Economic Development District, which serves all thirteen counties in the CVCOG Region with planning, grant search, grant writing, business development and technical assistance. Located in the CVCOG Region is also the Concho Valley Center for Entrepreneurial Development to help with economic development by providing management and technical assistance. Their mission is to “grow and support new business in the Concho Valley.” They offer a wide range of services to clients from strategic planning and business development assistance to support services. One of the many reasons they decided to locate in the Concho Valley Region is because the City of San Angelo was listed on the 2002 Forbes/Milliken Best Places for Business and Careers.

A major key to the economy of the area is agriculture. Agriculture is one of the largest industries in the CVCOG and brings in a significant amount of revenue for the area. In the CVCOG Region, majority of the land is comprised of farm and ranch land, primarily used for cattle, sheep, goats, grain, pecans, hay, and cotton. Concho, Kimble, McCulloch, and Menard Counties rely on an agricultural economy, where Coke, Crockett, Irion, Reagan, Schleicher, Sutton, and Tom Green Counties are the largest oil and gas producing lands of the Concho Valley Region.

Additionally, a critical portion of the economy lies within the major industries in the Concho Valley Region. With many being in Tom Green County, the major employers are Goodfellow Air Force Base (4,990 employees), Shannon Health System (2,565), San Angelo ISD (2,063), Angelo State University (1,635), City of San Angelo (877), San Angelo State Supported Living Center (860), San Angelo Community Medical Center (843), Tom Green County (748), and SITEL, Inc. (715).

For a broader perspective on occupation and development in the CVCOG Region, Figures 3-17a through 3-17c display the percentage of occupation by industry for each of the counties in the area.

Figure 3-17a. Occupation by Industry

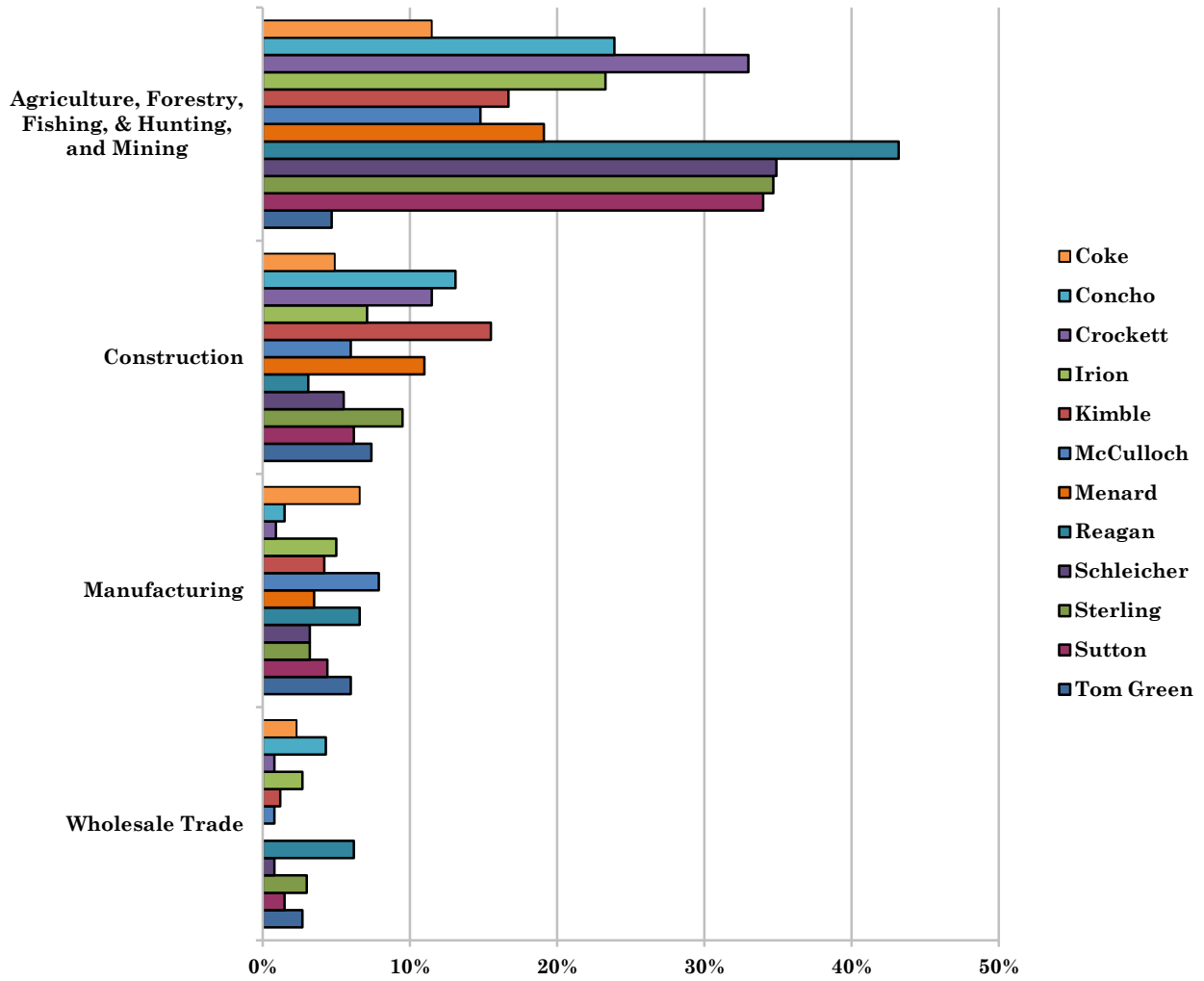




Figure 3-17b. Occupation by Industry

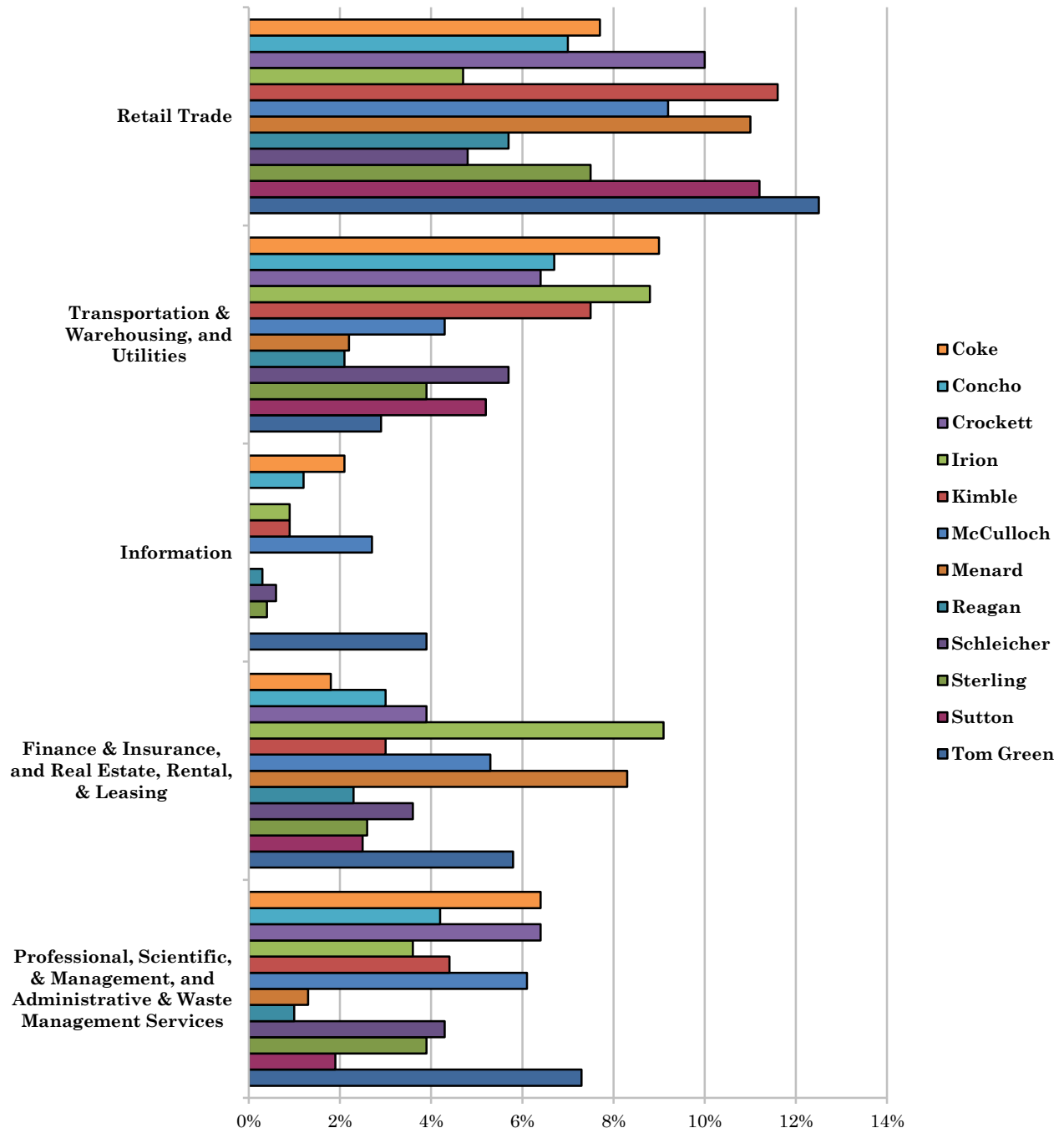
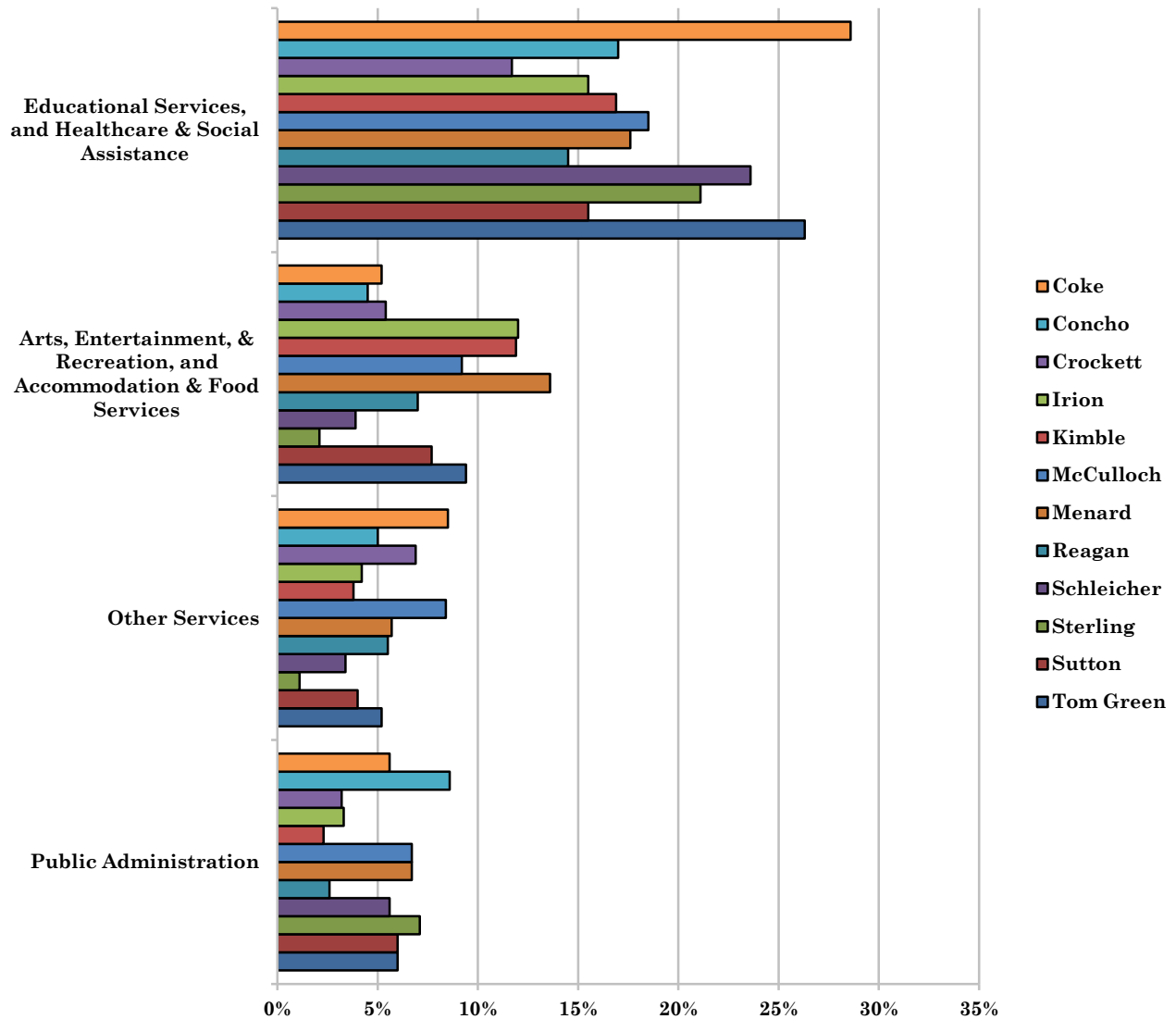


Figure 3-17c. Occupation by Industry



Also of importance to note, is the transportation capability for the CVCOG Region. There is one major interstate, Interstate 10, which provides access to Kimble, Sutton, and Crockett Counties. The other major roadways are US 87 that connects Sterling, Tom Green, Concho, and McCulloch Counties; US 83 that runs through Concho, Menard, and Kimble Counties; US 67, which passes through Tom Green, Irion, and Reagan Counties; and US 277 that goes through Coke, Tom Green, Schleicher, and Sutton Counties. There also are railways that service the area in the Counties of Irion, McCulloch, Reagan, and Tom Green. There is one commercial airport in the City of San Angelo in Tom Green County, and multiple small community airports for local use spread throughout the Concho Valley Region.

## Building Permits

Building permits indicate what types of buildings are being constructed and their relative uses. Table 3-11 lists the number of residential building permits for each county that have been granted between 1990 and 2010. The data includes all sizes of family homes for reported permits, as well as the construction costs to show the potential increase in vulnerability of structures to the various hazards assessed in this risk assessment. The increase in vulnerability can be attributed to the higher construction costs that would be factored into repairing or replacing a structure using current market values. Permits are reported annually in September and the data includes that for the years of 2009 and 2010 if available to demonstrate growth.

**Table 3-11. County Residential Building Permits<sup>1</sup>**

Coke County				Concho County			
Year	Buildings	Units	Construction Cost	Year	Buildings	Units	Construction Cost
1990	6	6	\$208,365	1990	No data reported		
1995	1	1	\$100,000	1995	No data reported		
2000	0	0	\$0	2000	No data reported		
2005	0	0	\$0	2005	No data reported		
2009	0	0	\$0	2009	No data reported		
2010	0	0	\$0	2010	No data reported		
Crockett County				Irion County			
Year	Buildings	Units	Construction Cost	Year	Buildings	Units	Construction Cost
1990	No data reported			1990	No data reported		
1995	No data reported			1995	No data reported		
2000	No data reported			2000	No data reported		
2005	No data reported			2005	No data reported		
2009	No data reported			2009	No data reported		
2010	No data reported			2010	No data reported		
Kimble County				McCulloch County			
Year	Buildings	Units	Construction Cost	Year	Buildings	Units	Construction Cost
1990	4	4	\$154,000	1990	3	3	\$160,000
1995	7	7	\$176,000	1995	11	11	\$689,800
2000	0	0	\$0	2000	5	6	\$275,000
2005	13	13	\$598,503	2005	0	0	\$0
2009	1	1	\$175,000	2009	1	1	\$88,000
2010	1	1	\$126,602	2010	0	0	\$0

<sup>1</sup> <http://censtats.census.gov/cgi-bin/bldgprmt/bldgdisp.pl>

## Regional Profile

Menard County				Reagan County			
Year	Buildings	Units	Construction Cost	Year	Buildings	Units	Construction Cost
1990	No data reported			1990	5	5	\$171,650
1996	No data reported			1995	3	3	\$55,000
2000	No data reported			2000	0	0	\$0
2005	No data reported			2005	3	3	\$75,000
2009	No data reported			2009	3	3	\$525,000
2010	No data reported			2010	0	0	\$0
Schleicher County				Sterling County			
Year	Buildings	Units	Construction Cost	Year	Buildings	Units	Construction Cost
1990	0	0	\$0	1990	No data reported		
1995	3	3	\$134,530	1995	No data reported		
2000	0	0	\$0	2000	No data reported		
2005	0	0	\$0	2005	No data reported		
2009	0	0	\$0	2009	No data reported		
2010	0	0	\$0	2010	No data reported		
Sutton County				Tom Green County			
Year	Buildings	Units	Construction Cost	Year	Buildings	Units	Construction Cost
1990	13	33	\$753,000	1990	131	131	\$5,427,059
1995	1	1	\$65,830	1995	223	225	\$18,820,596
2000	0	0	\$0	2000	243	247	\$25,994,248
2005	0	0	\$0	2005	270	270	\$38,472,930
2009	0	0	\$0	2009	193	516	\$38,385,984
2010	0	0	\$0	2010	177	177	\$24,682,463